



Your Lake George Real Estate Experts!

Davies Davies & Associates

P.O. Box 201, Cleverdale, NY 12820

P: (518) 656-9068 F: (518) 656-9087

www.davies-davies.com



©2024 Global MLS

Listing courtesy of: Howard Hanna Capital Inc.

MLS# - 202415386 - Price: \$561,900

32 Daintree Drive, Saratoga Springs, NY

Description: Brand New Saratoga's 'FOREST GROVE community', to be built - Belmonte Builders. This amazing new-home community has something for everyone ranging from maintenance free twin homes to single family homes. Offering 400+ home sites. Many floor plans to choose from - Ranches, first floor master suites, traditional styles and twin homes. Amenities include outdoor pool & pavilion, community center w/athletic facility, pickle ball courts, dog park and walking trails Pricing begins in the mid 500's. Additional Lot premiums apply. Low Wilton Taxes. Twin homes are maintenance free living. A 10x10 deck is provided for outdoor entertaining.

Acres: 0.2

Bedrooms: 2

Water: Public

Garage: 2

Exterior: Stone, Vinyl Siding

Cooling: Central Air

Town: Wilton

Bathrooms: 2 Full

Sewer: Public Sewer

Property Style: Ranch,
Townhouse

Exterior Features: Lighting

Parking Spaces: 4

Property Type: Residential

School District: Saratoga Springs

Heat: Natural Gas

Basement: Full

County: Saratoga

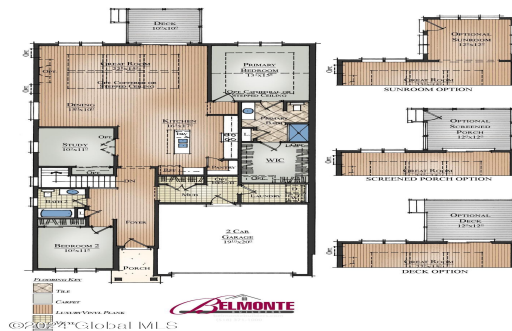
Interior Features: High Speed
Internet, Walk-In Closet(s),
Kitchen Island



Daniel Davies
NYS Licensed Real Estate
Broker GRI, ABR,
RSPS, SRS, C2EX
(518) 656-9068
dan@daviesrealty.net



©2024 Global MLS



©2024 Global MLS