



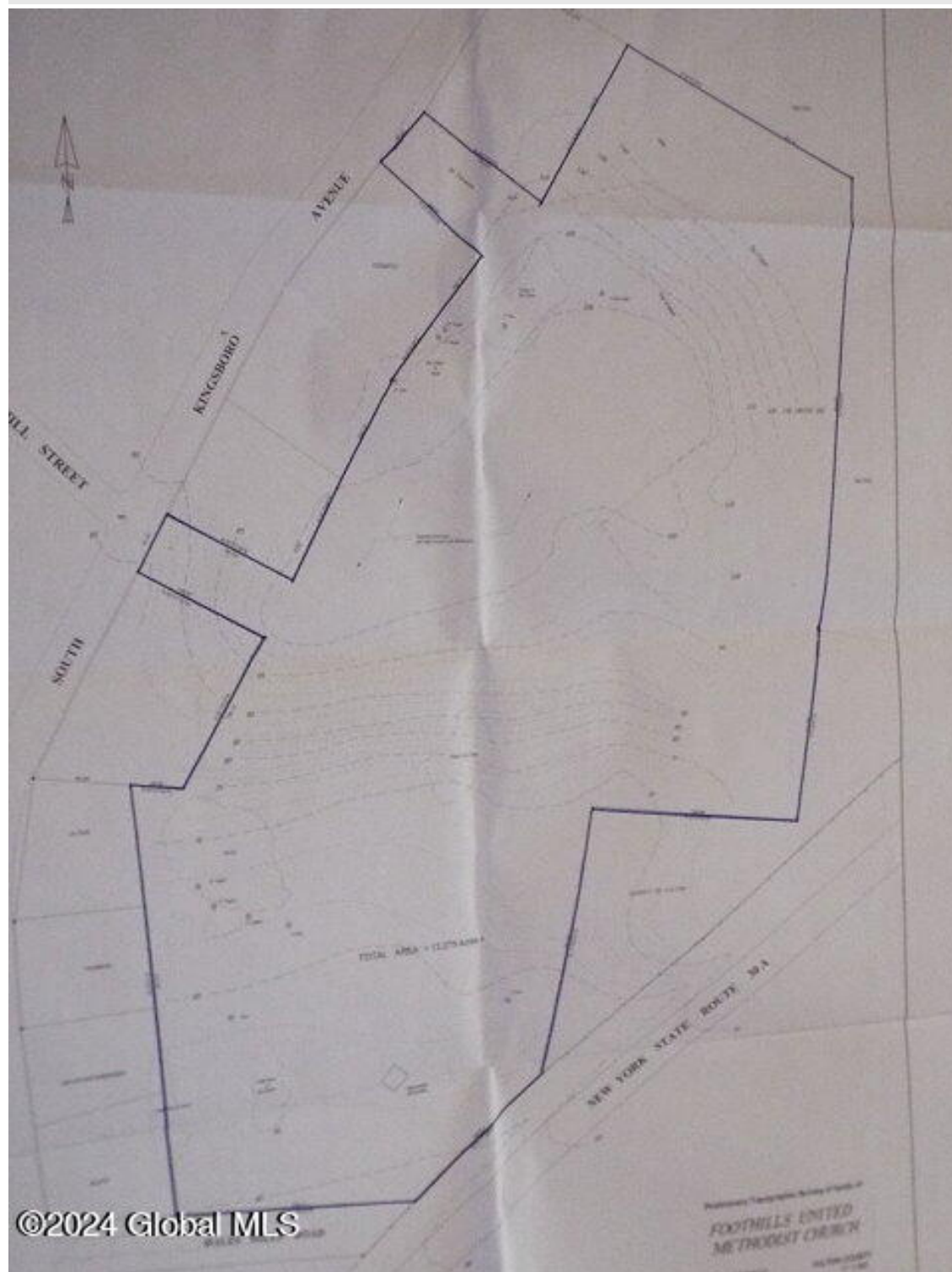
Your Lake George Real Estate Experts!

Davies Davies & Associates

P.O. Box 201, Cleverdale, NY 12820

P: (518) 656-9068 F: (518) 656-9087

www.davies-davies.com





Your Lake George Real Estate Experts!

Davies Davies & Associates

P.O. Box 201, Cleverdale, NY 12820

P: (518) 656-9068 F: (518) 656-9087

www.davies-davies.com

Listing courtesy of: Coldwell Banker Prime Prop

MLS# - 202415248 - Price: \$699,000

, , NY

Description: Two lots totaling 13.9 acres of commercially zoned land adjacent to Route 30A centrally located between Gloversville and Johnstown. Many options available for site development. A satisfactory phase I Environmental Site Assessment has been completed for this property. SBL 149.9-13-5, a 1.5 acre parcel, is included. It sits adjacent to the 12.4 acre parcel to the east and borders Route 30A. Average traffic volume in this area is 12,000+ cars per day. Electric on site, water and sewer to be brought in. More photos will be added soon.

Acres: 13.9

Estimated Taxes: \$8,200

Heat: None

Parking Spaces: 100

Property Type: Commercial

Water: Public

Exterior: None

Zoning: Commercial

School District: Gloversville

Sewer: Public Sewer

Cooling: None



Daniel Davies
NYS Licensed Real Estate
Broker GRI, ABR,
RSPS, SRS, C2EX
(518) 656-9068
dan@daviesrealty.net

