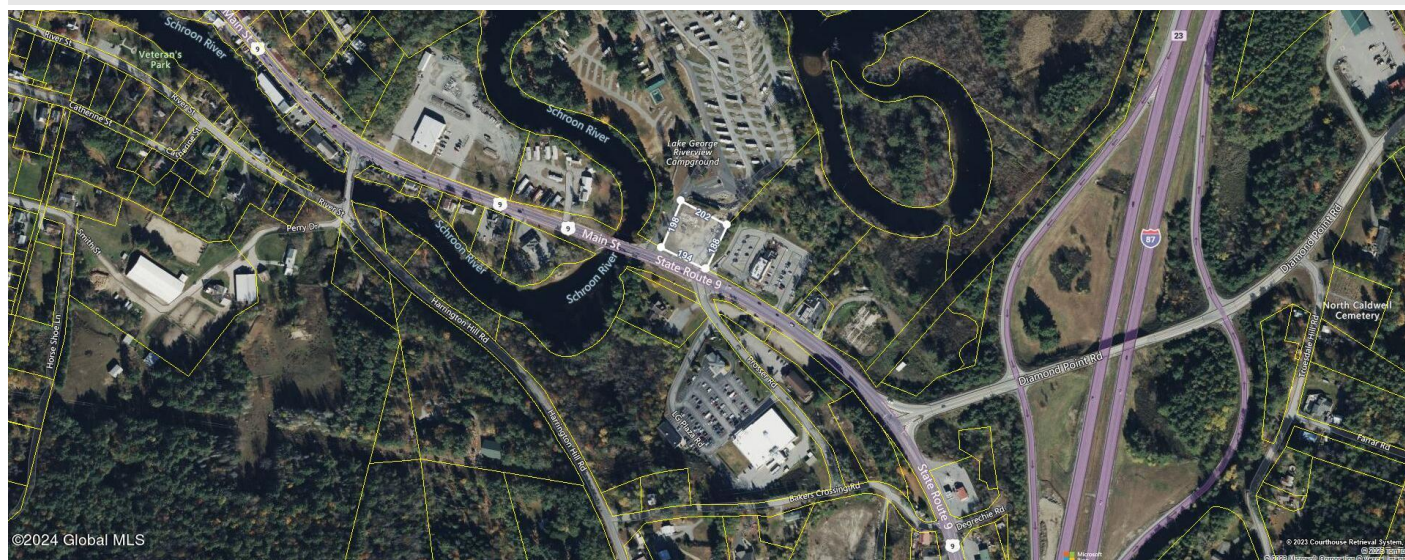




*Your Lake George Real Estate Experts!*

**Davies Davies & Associates**  
P.O. Box 201, Cleverdale, NY 12820  
P: (518) 656-9068 F: (518) 656-9087  
[www.davies-davies.com](http://www.davies-davies.com)



Listing courtesy of: eXp Realty

## **MLS# - 202414054 - Price: \$649,000**

3652 Us-9 , Lake George, NY

**Description:** 1 acre Commercial Building site located just off of Northway Exit 23 between McDonalds and Lake George Riverview RV Park, and across street from Price Chopper shopping center. Very high traffic volume, (over 12k/day per 2019 NYDOT report) All utilities at road. Great location for fast food establishment, convenience store, retail, restaurant, etc.

**Acres:** 0.92

**School District:** Lake George

**County:** Warren

**Town:** Lake George

**Estimated Taxes:** \$4,387

**Property Type:** Land

**Water:** Other, Public



**Daniel Davies**  
NYS Licensed Real Estate  
Broker GRI, ABR,  
RSPS, SRS, C2EX  
(518) 656-9068  
[dan@daviesrealty.net](mailto:dan@daviesrealty.net)

