



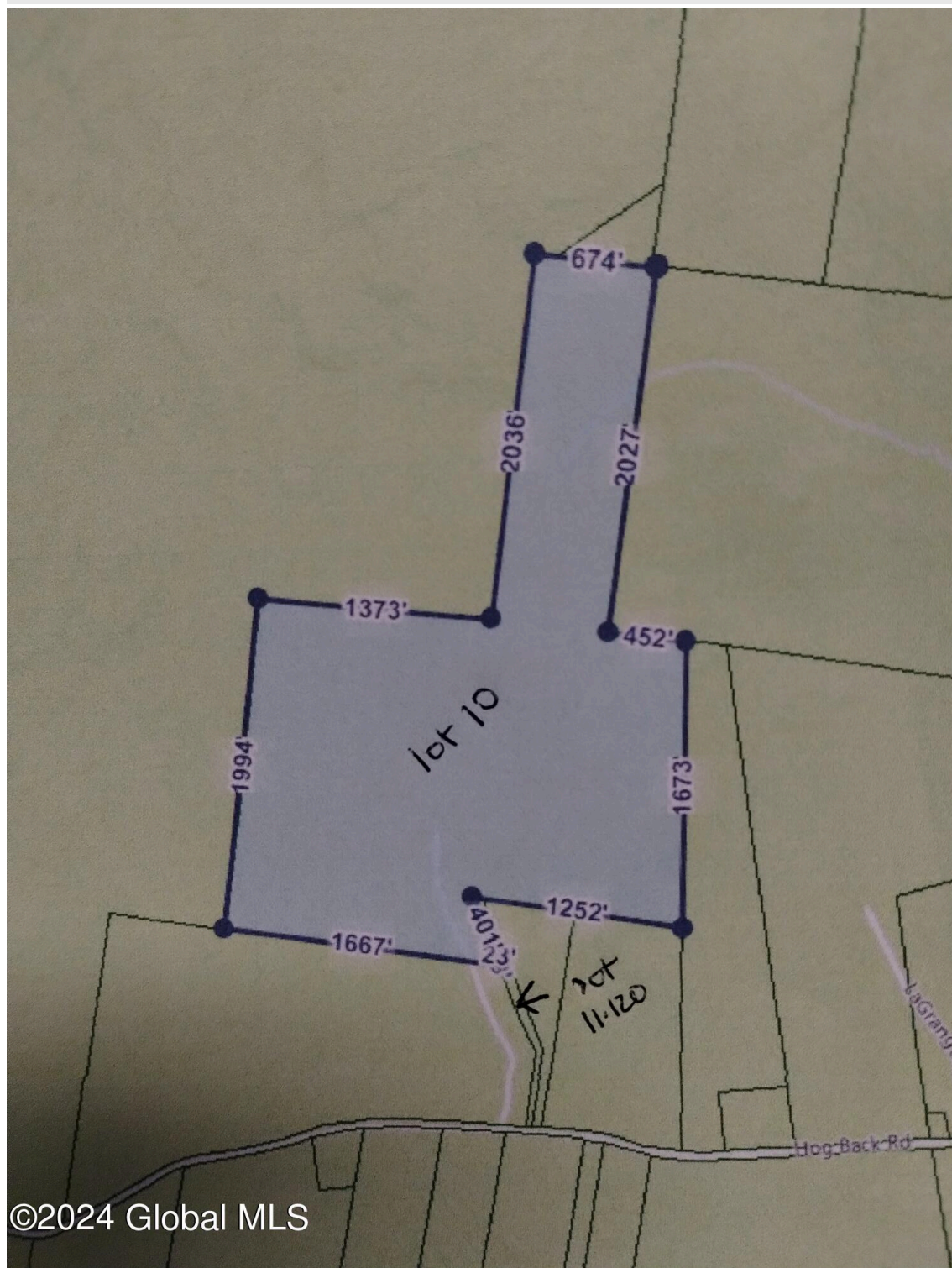
*Your Lake George Real Estate Experts!*

**Davies Davies & Associates**

P.O. Box 201, Cleverdale, NY 12820

P: (518) 656-9068 F: (518) 656-9087

[www.davies-davies.com](http://www.davies-davies.com)



©2024 Global MLS



*Your Lake George Real Estate Experts!*

**Davies Davies & Associates**

P.O. Box 201, Cleverdale, NY 12820

P: (518) 656-9068 F: (518) 656-9087

[www.davies-davies.com](http://www.davies-davies.com)

Listing courtesy of: Century 21 - Adirondacks

**MLS# - 202413411 - Price: \$199,900**

L10 Hogback Road, Crown Point, NY

**Description:** Beautiful large lot nestled in the woods of Crown Point. 146+ acre wooded lot, perfect for building your dream home. Enjoy the privacy while also being a short drive from Northern Lake George, Lake Champlain (Bridge to Vermont) and so much more. 20-25 minute drive to I-87. Property includes two lots 127.1-1-10.000 (main lot 144.76) and 127.1-1-11.120 (1.7 acres driveway access). There is a deeded right of way through this property to L19 Narrow Town Road, currently also listed MLS 202413893.

**Acres:** 146.46

**School District:** Crown Point

**Sewer:** None

**Town:** Crown Point

**Estimated Taxes:** \$1,600

**County:** Essex

**Property Type:** Land

**Water:** None



**Daniel Davies**  
NYS Licensed Real Estate  
Broker GRI, ABR,  
RSPS, SRS, C2EX  
(518) 656-9068  
[dan@daviesrealty.net](mailto:dan@daviesrealty.net)

