



*Your Lake George Real Estate Experts!*

**Davies Davies & Associates**

P.O. Box 201, Cleverdale, NY 12820

P: (518) 656-9068 F: (518) 656-9087

[www.davies-davies.com](http://www.davies-davies.com)



Listing courtesy of: Sterling Real Estate Group

**MLS# - 202413022 - Price: \$764,500**

7 Brooke Court, Clifton Park, NY

**Description:** OPEN HOUSE held at 8 Brooke Ct Saturday March 9th, 10am-Noon. Welcome to Brooke Ct; a few opportunities remain at this unique cul-de-sac of custom homes on 9 gorgeous, treed homesites ranging from 0.5-1.5 acres, bordering town-owned land! Featuring hardwood floors, tile, chef's kitchen with quartz/granite countertops, gas fireplace, public utilities, Brooke Ct is located minutes from shopping and restaurants but tucked away in a private setting. Choose from one of our home offerings such as this open concept "Birch" floor plan, bring your own plans, or work with our architect to design your dream home. Call today for more information! Pictures are examples of Builder's work, options are shown.

**Acres:** 1.47

**Bedrooms:** 4

**Water:** Public

**Garage:** 2

**Exterior:** Vinyl Siding

**Cooling:** Central Air

**Interior Features:** Radon System,  
Solid Surface Counters, Walk-In  
Closet(s), Ceramic Tile Bath,  
Kitchen Island

**Town:** Clifton Park

**Bathrooms:** 2 Full

**Sewer:** Public Sewer

**Property Style:** Colonial,  
Craftsman, Custom, Farmhouse

**Exterior Features:** Drive-Paved

**Parking Spaces:** 8

**Property Type:** Residential

**School District:** Shenendehowa

**Heat:** Forced Air, Natural Gas

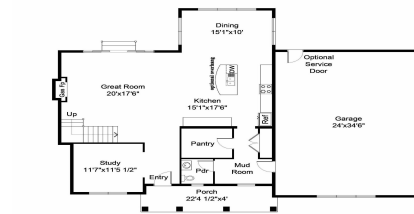
**Basement:** Full

**County:** Saratoga

**Zoning:** Single Residence



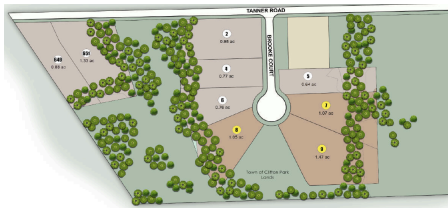
**Daniel Davies**  
NYS Licensed Real Estate  
Broker GRI, ABR,  
RSPS, SRS, C2EX  
(518) 656-9068  
[dan@daviesrealty.net](mailto:dan@daviesrealty.net)



©2022 Global MLS  
**FIRST FLOOR PLAN**



©2022 Global MLS  
**SECOND FLOOR PLAN**



©2024 Global MLS



©2024 Global MLS



©2024 Global MLS



©2024 Global MLS



©2024 Global MLS



©2024 Global MLS