



Your Lake George Real Estate Experts!

Davies Davies & Associates

P.O. Box 201, Cleverdale, NY 12820

P: (518) 656-9068 F: (518) 656-9087

www.davies-davies.com



©2023 Global MLS

Listing courtesy of: Sterling Real Estate Group

MLS# - 202412884 - Price: \$730,900

8 Edgewood Drive, Clifton Park, NY

Description: Welcome to Clifton Park's NEW luxury home community, Edgewood Estates! Immerse yourself in a peaceful park-like setting & come customize one of our bright & spacious floor plans or bring your own & let's make your dream home a reality! Providing elegance & tranquility, our estate sized home sites offer a luxurious collection of customizable layouts w/meticulous craftsmanship, sophisticated designs & impressive amenities; Granite/Quartz, Hdwd flrs, Merrilat Kitchens, Prim Ste Tile Shwr w/glass to name a few. Featuring the stunning 3BR/2.5 BA Primrose w/additional Study on a generous 1 acre home site. This elegant ranch offers an open concept perfect for entertaining & everyday living. Don't miss the opportunity to be part of this prestigious community. Photos include options.

Acres: 1

Bedrooms: 3

Estimated Taxes: \$13,720

Heat: Forced Air, Natural Gas

Basement: Full, Interior Entry, Unfinished

County: Saratoga

Interior Features: Solid Surface Counters, Walk-In Closet(s), Kitchen Island

Town: Clifton Park

Bathrooms: 2 Full

Water: Public

Garage: 2

Exterior: Vinyl Siding

Cooling: Central Air

Property Type: Residential

School District: Shenendehowa

Sewer: Public Sewer

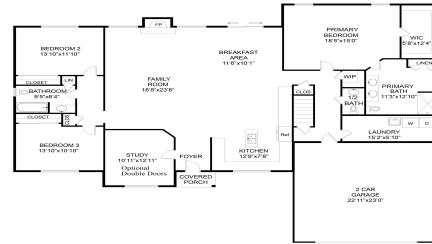
Property Style: Ranch

Exterior Features: Drive-Paved, Lighting

Parking Spaces: 2



Daniel Davies
NYS Licensed Real Estate
Broker GRI, ABR,
RSPS, SRS, C2EX
(518) 656-9068
dan@daviesrealty.net



©2023 Global MLS

FLOOR PLAN



©2023 Global MLS



©2023 Global MLS



©2023 Global MLS



©2023 Global MLS



©2023 Global MLS



©2023 Global MLS



©2023 Global MLS