



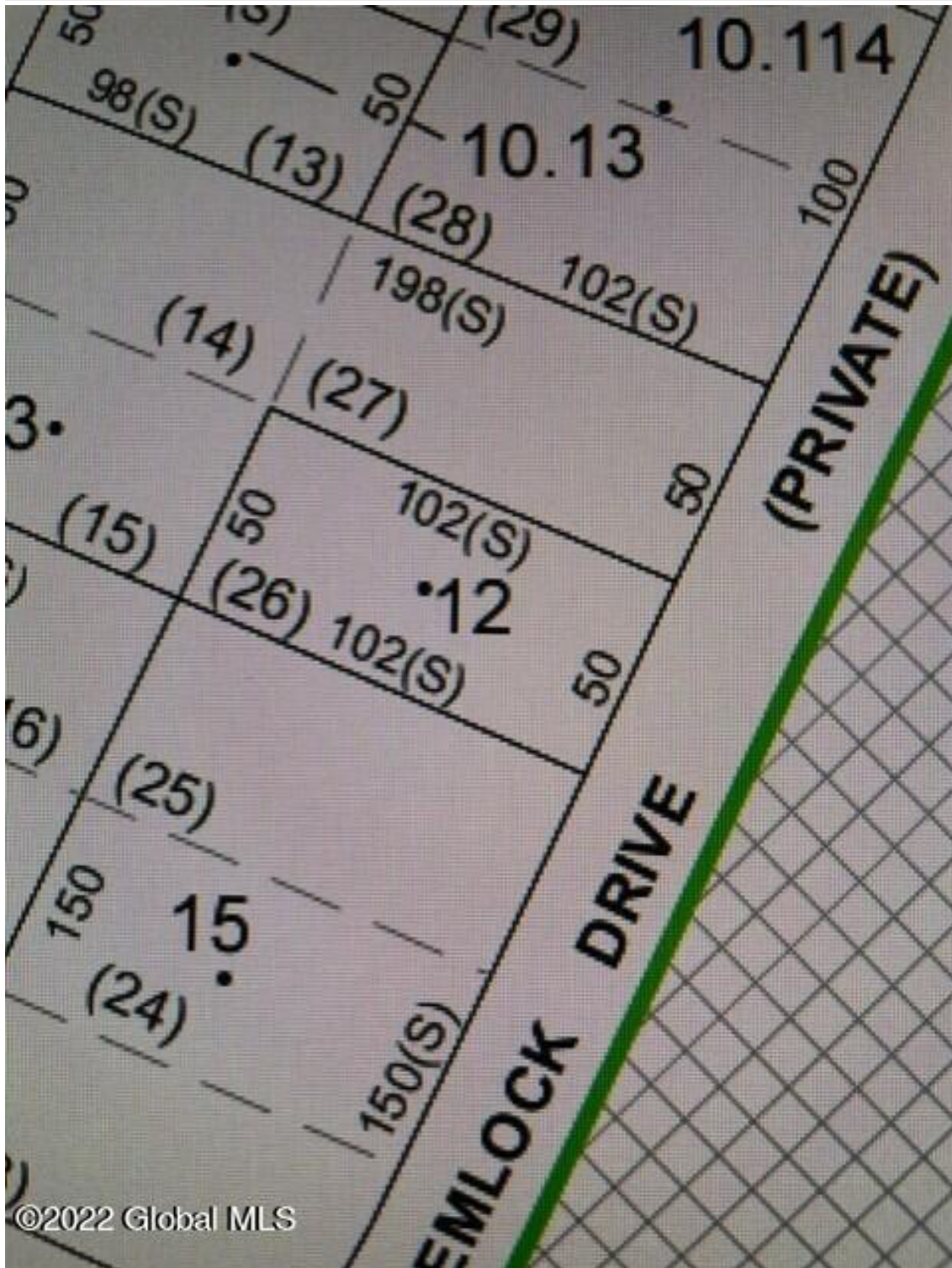
Your Lake George Real Estate Experts!

Davies Davies & Associates

P.O. Box 201, Cleverdale, NY 12820

P: (518) 656-9068 F: (518) 656-9087

www.davies-davies.com



©2022 Global MLS



Your Lake George Real Estate Experts!

Davies Davies & Associates

P.O. Box 201, Cleverdale, NY 12820

P: (518) 656-9068 F: (518) 656-9087

www.davies-davies.com

Listing courtesy of: Coldwell Banker Prime Prop

MLS# - 202412813 - Price: \$35,000

L-12 Hemlock (priv) Drive, Hadley, NY

Description: Your pathway to The Great Sacandaga Lake! There is a 10' lake access near The Bachlerville Bridge. Taxes are very low. If you are looking for a spot to have as yours at the lake, this is worth looking at. **MUST CHECK WITH REALTOR BEFORE GOING TO THE PROPERTY** as it is located on a paper road whereby you have to walk through the woods, no trespassing allowed on other neighboring properties. BY APPOINTMENT ONLY. Possible owner financing.

Acres: 0.12

School District: Edinburg

Sewer: None

Town: Edinburg

Estimated Taxes: \$32

County: Saratoga

Property Type: Land

Water: None



Daniel Davies
NYS Licensed Real Estate
Broker GRI, ABR,
RSPS, SRS, C2EX
(518) 656-9068
dan@daviesrealty.net

