



Your Lake George Real Estate Experts!

Davies Davies & Associates

P.O. Box 201, Cleverdale, NY 12820

P: (518) 656-9068 F: (518) 656-9087

www.davies-davies.com



©2024 Global MLS

Listing courtesy of: Charlotteville Realty

MLS# - 202412576 - Price: \$349,000

175 Sam Lape Road, Summit, NY

Description: Welcome to 175 Sam Lape Rd, a serene farmhouse nestled on 2.3 acres with easy access to state forests and snowmobile trails. This private retreat offers 5 bedrooms, 3 baths, and breathtaking views. Highlights include a cozy stone fireplace, well-maintained interiors, a large garage with a workshop, and a two-story barn. Perfectly located just 10 minutes from I88, it's a gateway to Cooperstown, Albany, Windham and Plattekill for skiing, and the Schoharie Valley. Ideal for those seeking peace and outdoor adventure. A unique blend of rustic charm and convenience awaits. Additional land is available.

Acres: 2.3

Bedrooms: 5

Estimated Taxes: \$3,076

Heat: Forced Air, Oil, Propane,
Wood, Wood Stove

Basement: Bilco Doors, Full,
Interior Entry

County: Schoharie

Interior Features: High Speed
Internet, Paddle Fan, Ceramic Tile
Bath, Eat-in Kitchen

Town: Summit

Bathrooms: 3 Full

Water: Drilled Well

Garage: 2

Exterior: Vinyl Siding

Cooling: Window Unit(s)

Property Type: Residential

School

District: Cobleskill-Richmondville

Sewer: Septic Tank

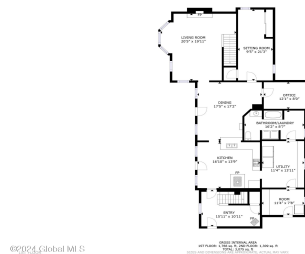
Property Style: Farmhouse,
Traditional

Exterior Features: Barn

Parking Spaces: 6



Daniel Davies
NYS Licensed Real Estate
Broker GRI, ABR,
RSPS, SRS, C2EX
(518) 656-9068
dan@daviesrealty.net



Matterport



Matterport

