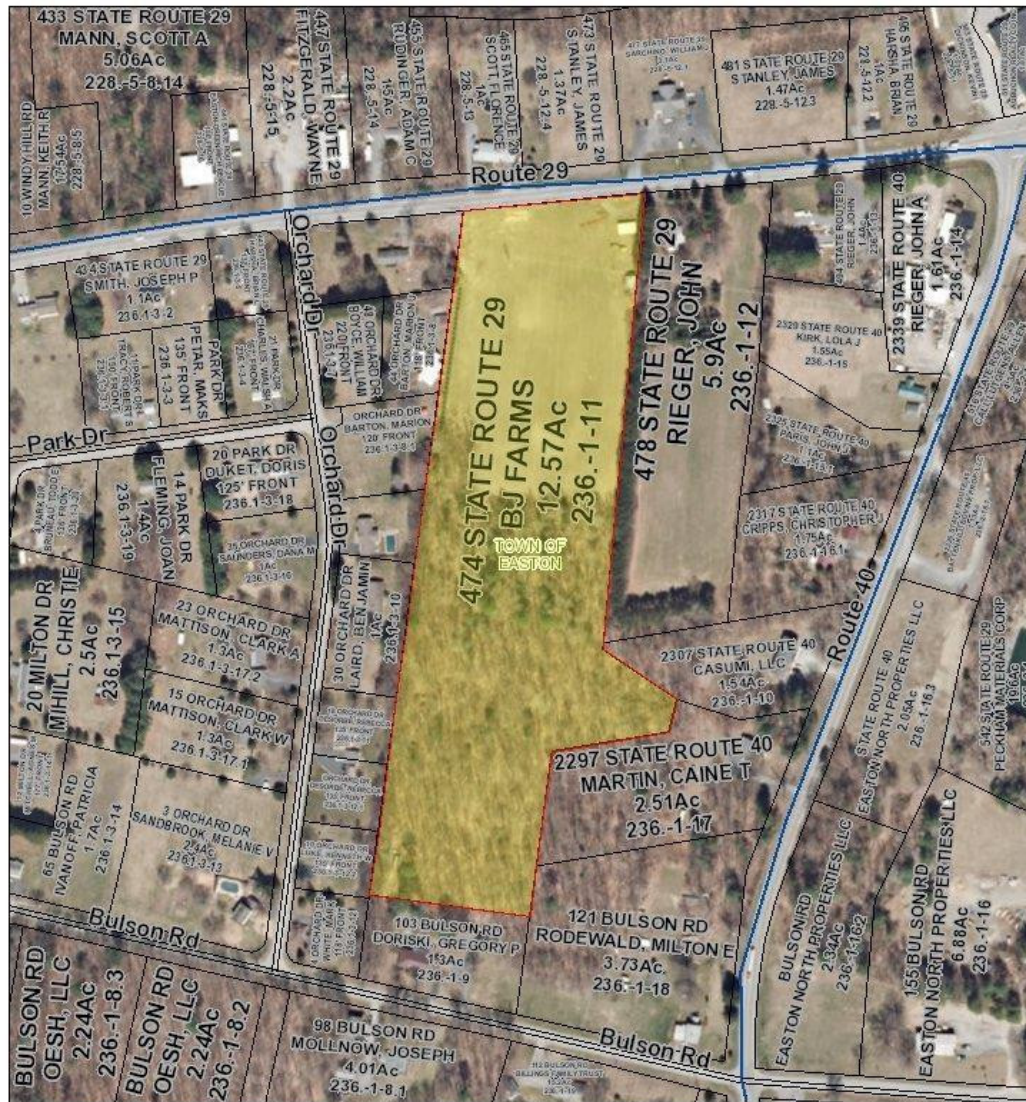




Your Lake George Real Estate Experts!

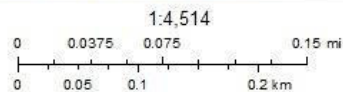
Davies Davies & Associates
P.O. Box 201, Cleverdale, NY 12820
P: (518) 656-9068 F: (518) 656-9087
www.davies-davies.com

Custom Print



June 16, 2021

- | | | | | | |
|--|-------------------|--|--------------|--|------------------------|
| | Hamlets | | State Road | | Fairground |
| | Villages | | County Road | | Town and Village Halls |
| | Towns | | Town Road | | |
| | Parcels | | Village Road | | |
| | Land Hooks | | Private Road | | |
| | Washington County | | Airports | | |



Source: Esri, Maxar, GeoEye, Earthstar Geographics, CNES/Airbus DS, USDA, USGS, AeroGRID, IGN, and the GIS User Community
 Esri, HERE, Garmin, (c) OpenStreetMap contributors, and the GIS user community

GLOBAL MLS, Inc.



Your Lake George Real Estate Experts!

Davies Davies & Associates

P.O. Box 201, Cleverdale, NY 12820

P: (518) 656-9068 F: (518) 656-9087

www.davies-davies.com

Listing courtesy of: Jamie Lewis Realty

MLS# - 202411362 - Price: \$435,000

474 State Route 29 , Greenwich, NY

Description: Location Location Location! Opportunity of a lifetime to own 12.57 Commercial Acres right between Schuylerville and Greenwich on busy State Route 29 in the Town of Easton. Vacant land has open fields in the front and woods in the rear with 365 feet of State highway frontage. Endless possibilities!! If you build it, they will come!! There are many existing successful businesses and multiple new commercial properties being built in this growing area of Southern Washington County. Main corridor between Saratoga Springs and Vermont. Less than a mile from State Route 40 and only 20 miles to NYS I-87, convenient to the Capital District, and the Albany International Airport. Make your appointment today.

Acres: 12.57

Property Type: Commercial

Water: None

Property Style: Land Only

County: Washington

Zoning: None

Above Ground Square Feet: 544 **Town:** Easton

School District: Greenwich

Sewer: None

Basement: None

Cooling: None

Estimated Taxes: \$6,269

Heat: Other

Exterior: None

Parking Spaces: 50



Daniel Davies
NYS Licensed Real Estate
Broker GRI, ABR,
RSPS, SRS, C2EX
(518) 656-9068
dan@daviesrealty.net

