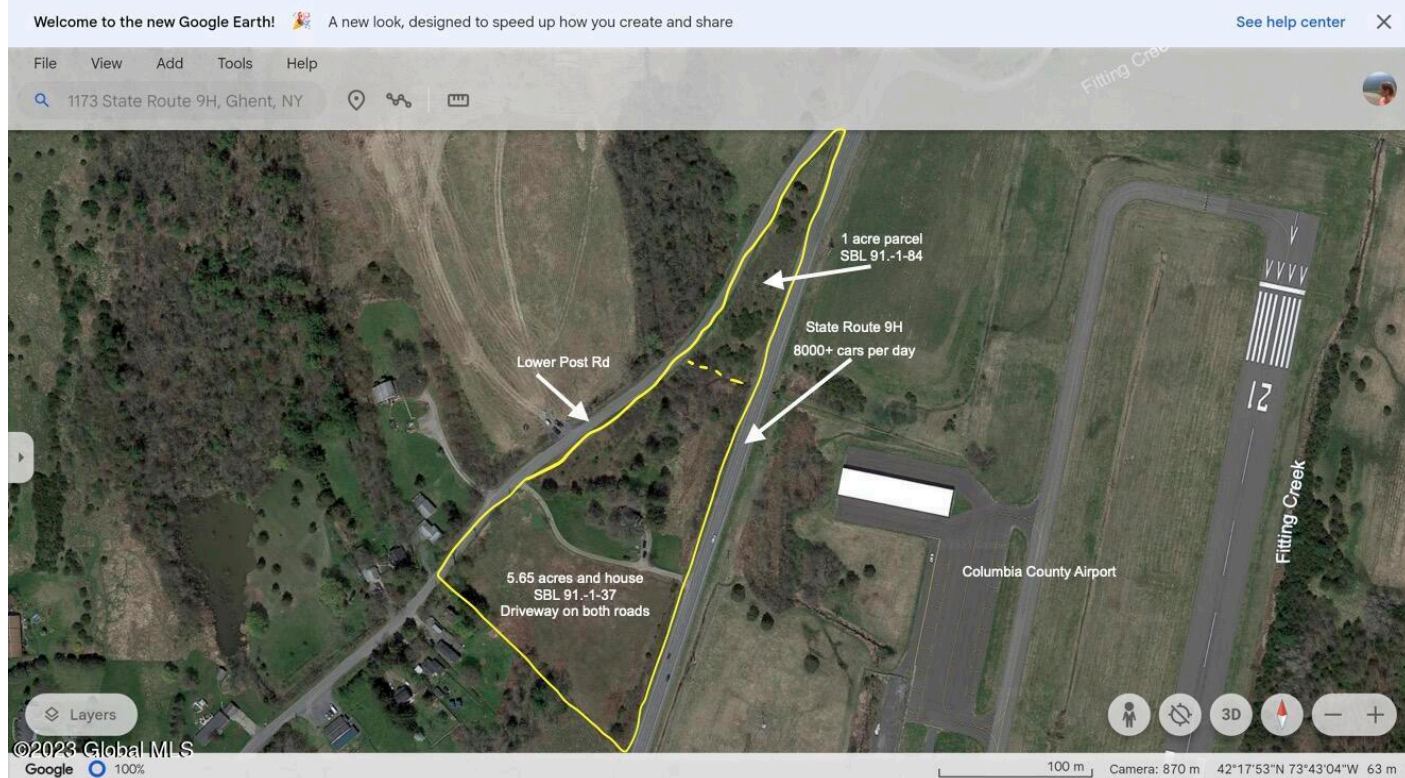




Your Lake George Real Estate Experts!

Davies Davies & Associates
P.O. Box 201, Cleverdale, NY 12820
P: (518) 656-9068 F: (518) 656-9087
www.davies-davies.com



Listing courtesy of: Gilcrest Properties

MLS# - 202329202 - Price: \$899,900

1173 Ny-9h , Ghent, NY

Description: Almost 1000' of road frontage of PRIME commercial land on just the Route 9H side alone! 2 parcels with 6.65 acres in total; 5.65 acres with the 4 bedroom, 1 bath house that needs a good amount of work and a separate vacant 1 acre parcel that goes all the way to the point on Lower Post Rd. Commercially zoned land that will allow for many uses (set attached docs for use table). Located directly across the street from the Columbia County Airport. 5 minutes to Hudson, 2.5 hrs NYC/Boston and 35 min to Albany.

Acres: 6.65

Property Type: Commercial

Water: Dug Well

Property Style: Commercial

County: Columbia

Zoning: Commercial

Above Ground Square Feet: 1482

School District: Hudson

Sewer: Septic Tank

Basement: Unfinished

Cooling: None

Town: Ghent

Estimated Taxes: \$3,954

Heat: Forced Air, Oil

Exterior: Frame

Parking Spaces: 30



Daniel Davies
NYS Licensed Real Estate
Broker GRI, ABR,
RSPS, SRS, C2EX
(518) 656-9068
dan@daviesrealty.net

