



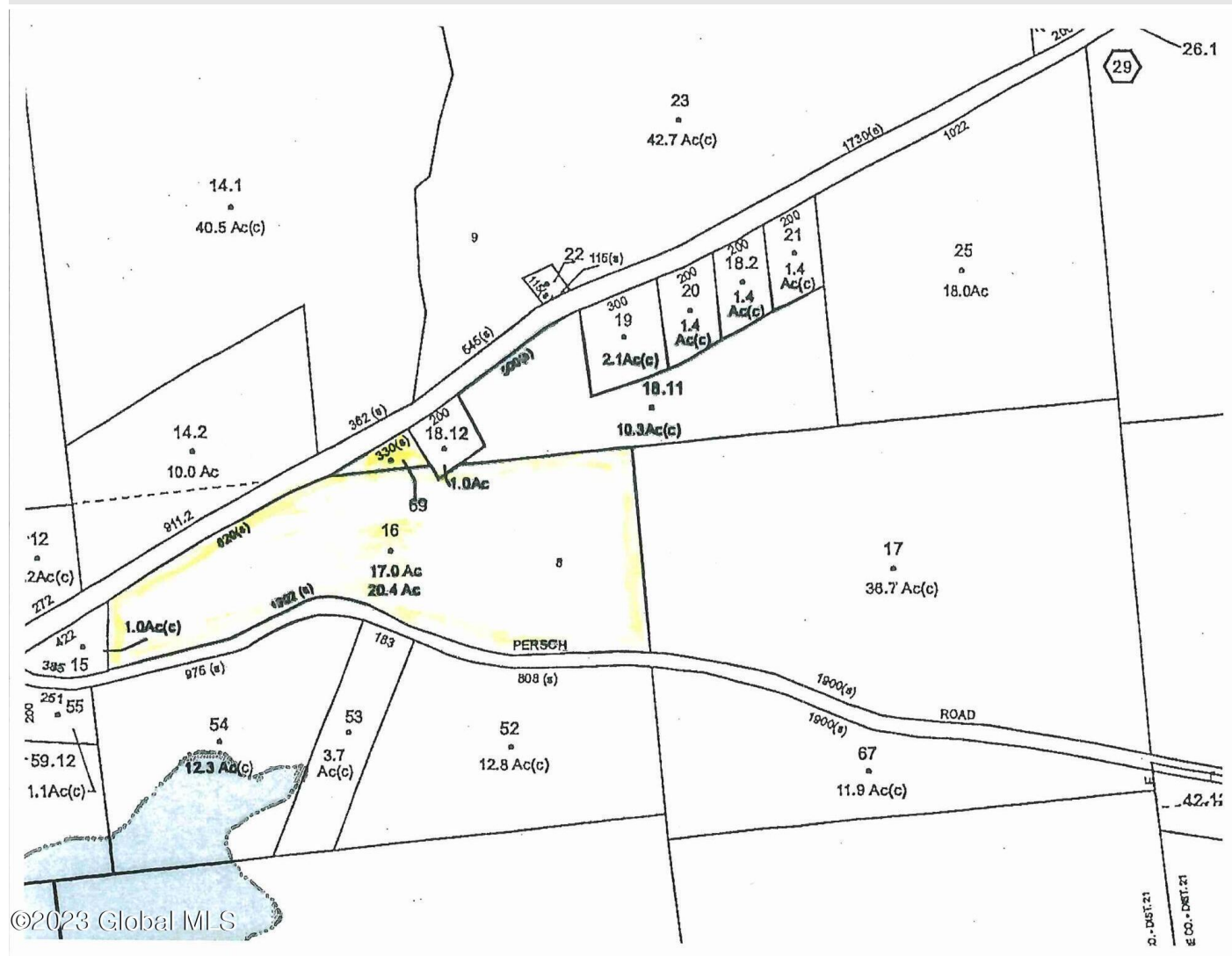
Your Lake George Real Estate Experts!

Davies Davies & Associates

P.O. Box 201, Cleverdale, NY 12820

P: (518) 656-9068 F: (518) 656-9087

www.davies-davies.com



Listing courtesy of: Coldwell Banker Prime Prop

MLS# - 202325623 - Price: \$44,900

L16, L69 County Highway 112 , Johnstown, NY

Description: The property is heavily wooded and has access (1150') off County highway 112 or if preferred, it has access (1900') off Persch road as well. However, it does not include the corner of Cohwy112 and Persch road. There are multiple areas where a home or cabin could be sited. There are some wetlands and plenty of deer signs and wildlife. It has been in the owner's family for well over 60 years.

Acres: 18.5

School District: Gloversville

Sewer: None

Town: Gloversville

Estimated Taxes: \$700

County: Fulton

Property Type: Land

Water: None



Daniel Davies

NYS Licensed Real Estate
Broker GRI, ABR,
RSPS, SRS, C2EX
(518) 656-9068
dan@daviesrealty.net