



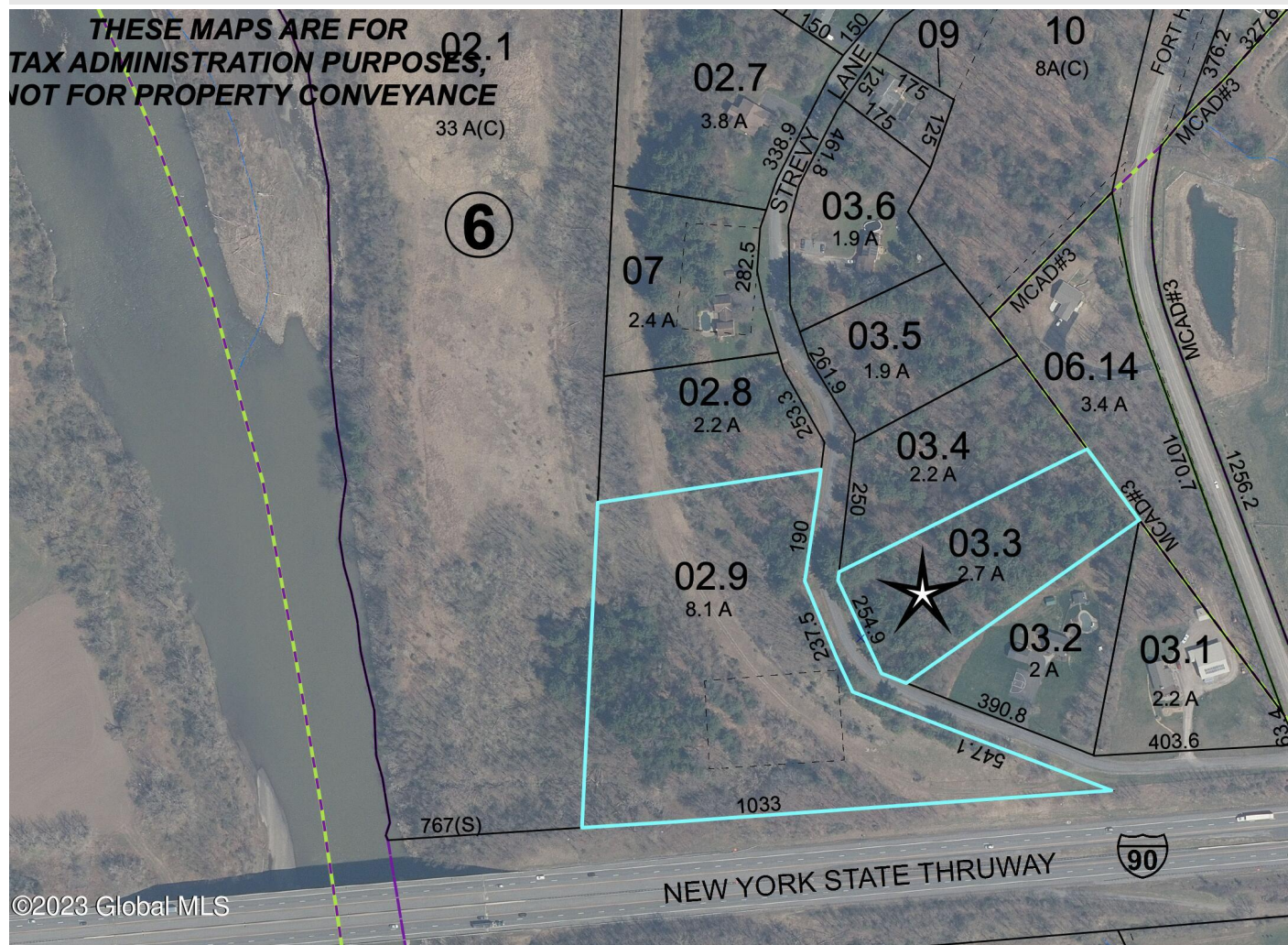
Your Lake George Real Estate Experts!

Davies Davies & Associates

P.O. Box 201, Cleverdale, NY 12820

P: (518) 656-9068 F: (518) 656-9087

www.davies-davies.com



Listing courtesy of: Junell Realty LLC

MLS# - 202325207 - Price: \$29,900

3 Strevy Lane, Amsterdam, NY

Description: 2.70 +/- Surveyed acres in the Town of Florida, Fonda-Fultonville School District, County of Montgomery with approximately 254 +/- Feet of Road Frontage. Look for sign. Annual taxes with no exemptions \$348 +/- . Will need a driveway, private well and septic area. Electric & Cable at the Road. Great location to build your home on. There are Deed Restrictions with this lot. Houses to be built must be at least 1800 sq.ft. of living space, NO Singlewides/Doublewides/Manufactured Homes, (seller DOES allow a Modular Home) and any home construction must be completed within 1 year of the state of construction. Strevy Lane is situated off Fort Hunter Road and / or Route 5s.

Acres: 2.7

Town: Amsterdam

Property Type: Land

School District: Fonda-Fultonville

Estimated Taxes: \$348

Water: None

Sewer: None

County: Montgomery



Daniel Davies
NYS Licensed Real Estate
Broker GRI, ABR,
RSPS, SRS, C2EX
(518) 656-9068
dan@daviesrealty.net

