



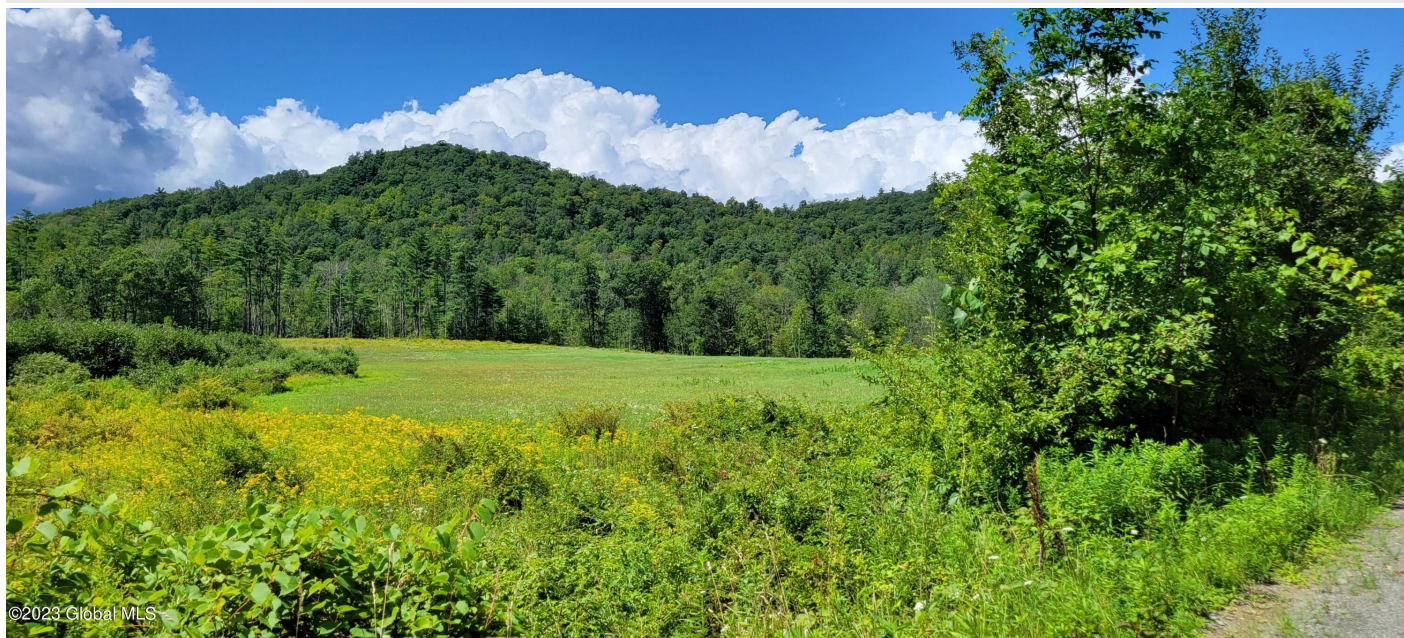
Your Lake George Real Estate Experts!

Davies Davies & Associates

P.O. Box 201, Cleverdale, NY 12820

P: (518) 656-9068 F: (518) 656-9087

www.davies-davies.com



Listing courtesy of: Marker's Octagon Realty

MLS# - 202323341 - Price: \$250,000

599 Lewis Hollow Road, Petersburg, NY

Description: Here is an opportunity to enjoy solitude and nature at its best. There are several open locations to build your dream home along with open meadows for crops and/or gardening. Parcel also borders 1,544 acres of land owned by State of New York which is part of Taconic Ridge State Forest where you can hike, snowshoe, cross-country ski, mountain bike, and ride horses.

Acres: 177

School District: Berlin

County: Rensselaer

Town: Petersburg

Estimated Taxes: \$8,138

Zoning: None

Property Type: Land

Water: Other, Spring



Daniel Davies
NYS Licensed Real Estate
Broker GRI, ABR,
RSPS, SRS, C2EX
(518) 656-9068
dan@daviesrealty.net

