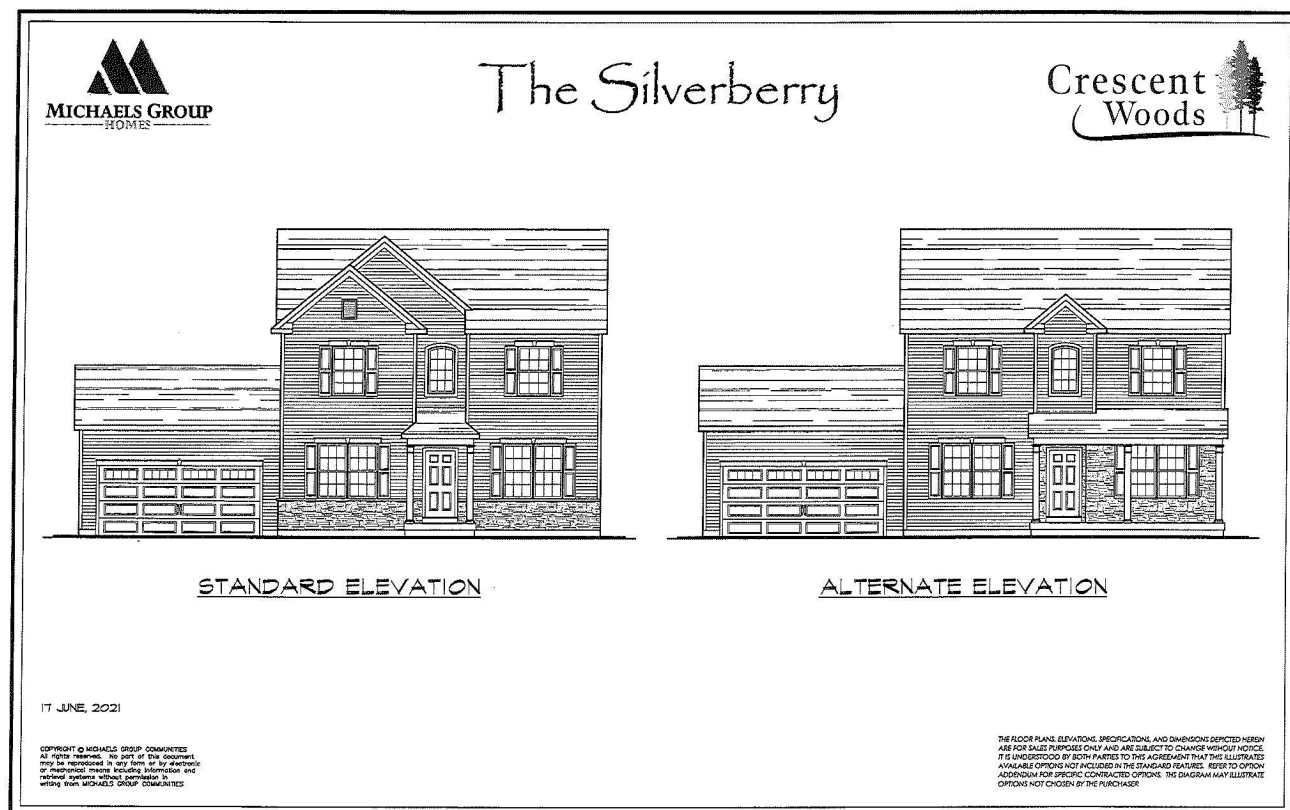




Your Lake George Real Estate Experts!

**Davies Davies & Associates**  
P.O. Box 201, Cleverdale, NY 12820  
P: (518) 656-9068 F: (518) 656-9087  
[www.davies-davies.com](http://www.davies-davies.com)



©2022 Global MLS

Listing courtesy of: Keller Williams Capital Dist

**MLS# - 202322786 - Price: \$567,900**

1a Spencer Street, Clifton Park, NY

**Description:** Located minutes from the highway and conveniently close to shopping. Crescent Woods offers both HOA and non-HOA new home builds. Choose between ranch, first floor masters and colonials. Open floor plans, engineered hardwood flooring, gourmet kitchens with Schrock Maple cabinets, stainless steel appliance package. Gas fireplace, recessed lighting, beautiful master suites with luxury master baths. 9' ceilings on first floor and a stylish exterior finish package are just a few of the amazing features. Ask about our walk out and garden level premium packages!

**Acres:** 0.33

**Bedrooms:** 4

**Estimated Taxes:** \$10,000

**Heat:** Forced Air, Natural Gas

**Basement:** Exterior Entry, Full, Interior Entry, Unfinished, Walk-Out Access

**County:** Saratoga

**Zoning:** Single Residence

**Town:** Clifton Park

**Bathrooms:** 2 Full

**Water:** Public

**Garage:** 2

**Exterior:** Stone, Vinyl Siding

**Cooling:** Central Air

**Interior Features:** Grinder Pump, High Speed Internet, Walk-In Closet(s), Ceramic Tile Bath, Crown Molding, Satellite Internet, Eat-in Kitchen, Kitchen Island

**Property Type:** Residential

**School District:** Shenendehowa

**Sewer:** Public Sewer

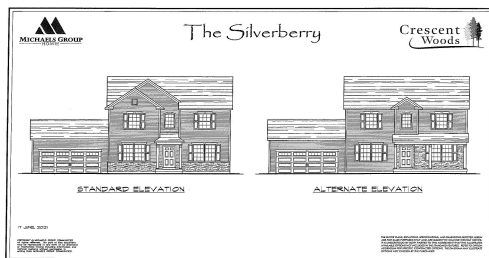
**Property Style:** 2 Story, Colonial

**Exterior Features:** Drive-Paved, Lighting

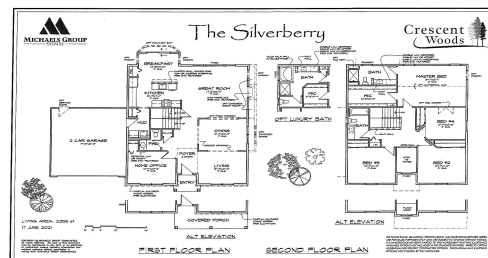
**Parking Spaces:** 4



**Daniel Davies**  
NYS Licensed Real Estate  
Broker GRI, ABR,  
RSPS, SRS, C2EX  
(518) 656-9068  
[dan@daviesrealty.net](mailto:dan@daviesrealty.net)



©9/02/22 Global MLS



©9/02/22 Global MLS