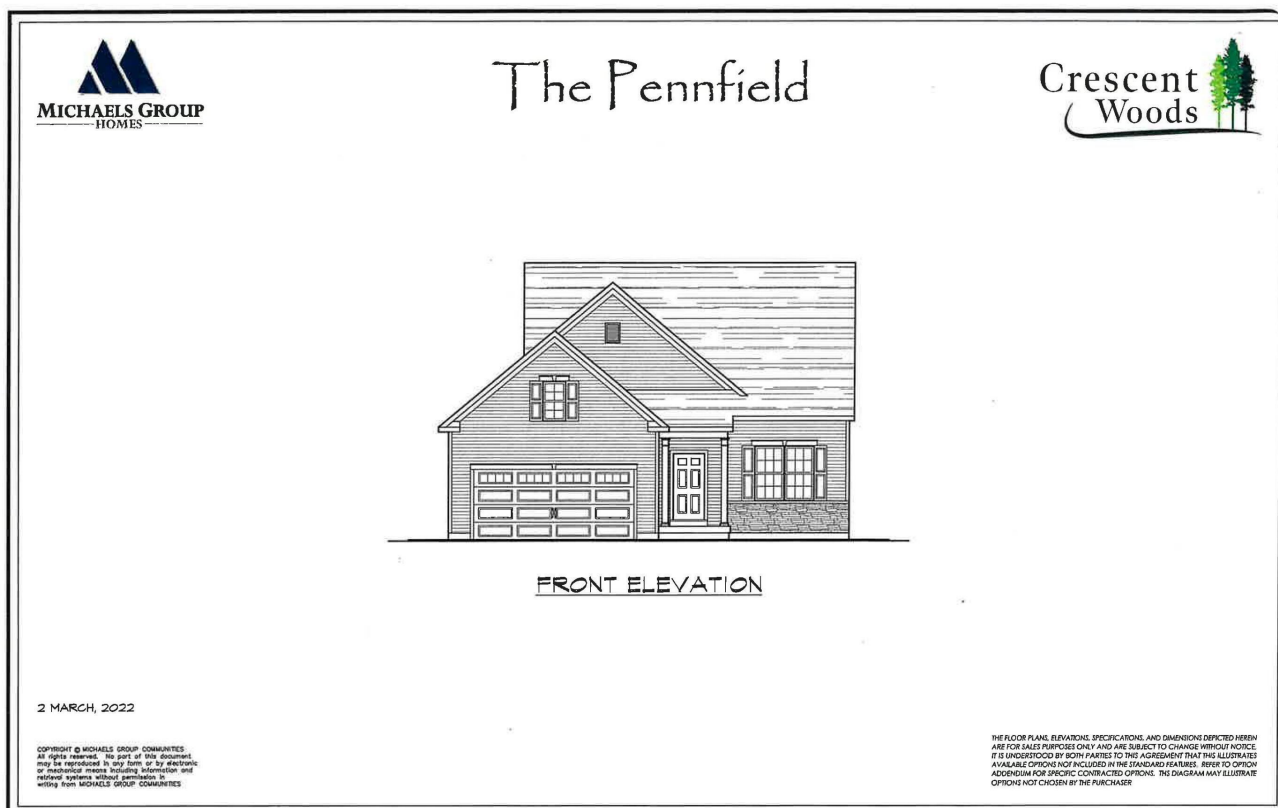




Your Lake George Real Estate Experts!

Davies Davies & Associates
P.O. Box 201, Cleverdale, NY 12820
P: (518) 656-9068 F: (518) 656-9087
www.davies-davies.com



©2023 Global MLS

Listing courtesy of: Keller Williams Capital Dist

MLS# - 202322784 - Price: \$551,900

1d Fairmont Drive, Clifton Park, NY

Description: Located minutes from the highway and conveniently close to shopping, Crescent Woods offers both HOA and non-HOA new home builds. Choose between ranch, first floor masters and colonials. Open floor plans, engineered hardwood flooring, gourmet kitchens with Schrock Maple cabinets, stainless steel appliance package. Gas Fireplace, recessed lighting, beautiful master suites with luxury master baths, 9' ceilings on first floor, and a stylish exterior finish package are just a few of the amazing features. Ask about our Walk Out and Garden Level Premium packages!

Acres: 0.25

Bedrooms: 3

Estimated Taxes: \$10,000

Heat: Forced Air, Natural Gas

Basement: Exterior Entry, Full, Interior Entry, Unfinished, Walk-Out Access

County: Saratoga

Zoning: Single Residence

Town: Clifton Park

Bathrooms: 3 Full

Water: Public

Garage: 2

Exterior: Stone, Vinyl Siding

Cooling: Central Air

Interior Features: Grinder Pump, High Speed Internet, Walk-In Closet(s), Ceramic Tile Bath, Crown Molding, Satellite Internet, Eat-in Kitchen, Kitchen Island

Property Type: Residential

School District: Shenendehowa

Sewer: Public Sewer

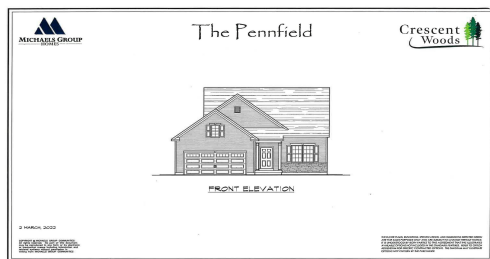
Property Style: 2 Story, Colonial, Ranch

Exterior Features: Drive-Paved, Lighting

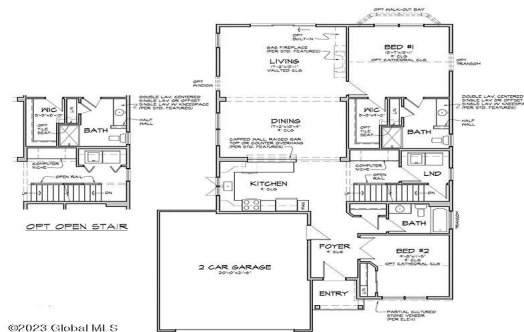
Parking Spaces: 4



Daniel Davies
NYS Licensed Real Estate
Broker GRI, ABR,
RSPS, SRS, C2EX
(518) 656-9068
dan@daviesrealty.net



©2023 Global ML S



©2023 Global ML S