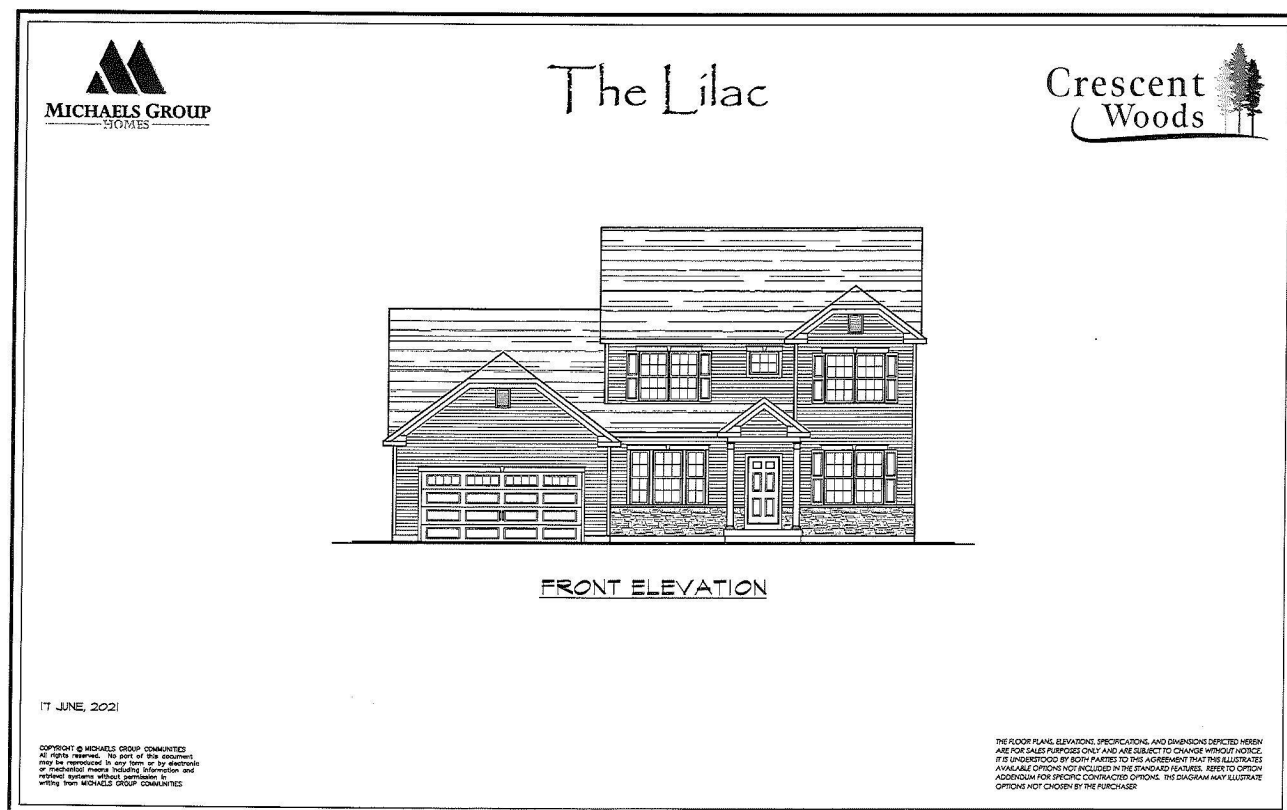




Your Lake George Real Estate Experts!

**Davies Davies & Associates**  
P.O. Box 201, Cleverdale, NY 12820  
P: (518) 656-9068 F: (518) 656-9087  
[www.davies-davies.com](http://www.davies-davies.com)



©2022 Global MLS

Listing courtesy of: Keller Williams Capital Dist

**MLS# - 202322777 - Price: \$604,900**

13 Fairmont Drive, Clifton Park, NY

**Description:** New construction, Sold before print. Located minutes from the highway and conveniently close to shopping. Crescent Woods offers both HOA and non-HOA new home builds. Choose between ranch, first floor masters and colonials. (See Documents for all Floor Plans). Open floor plans, engineered hardwood flooring, gourmet kitchens with Schrock Maple cabinets, stainless steel appliance package. Gas fireplace, recessed lighting, beautiful master suites with luxury master baths. 9' ceilings on first floor and a stylish exterior finish package are just a few of the amazing features. Ask about our walk out and garden level premium packages!

**Acres:** 33

**Bedrooms:** 3

**Estimated Taxes:** \$10,000

**Heat:** Forced Air, Natural Gas

**Basement:** Full, Interior Entry, Unfinished

**County:** Saratoga

**Zoning:** Single Residence

**Town:** Clifton Park

**Bathrooms:** 2 Full

**Water:** Public

**Garage:** 2

**Exterior:** Stone, Vinyl Siding

**Cooling:** Central Air

**Interior Features:** Grinder Pump, High Speed Internet, Walk-In Closet(s), Ceramic Tile Bath, Crown Molding, Satellite Internet

**Property Type:** Residential

**School District:** Shenendehowa

**Sewer:** Public Sewer

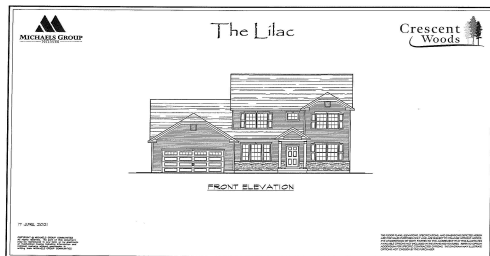
**Property Style:** Ranch

**Exterior Features:** Drive-Paved, Lighting

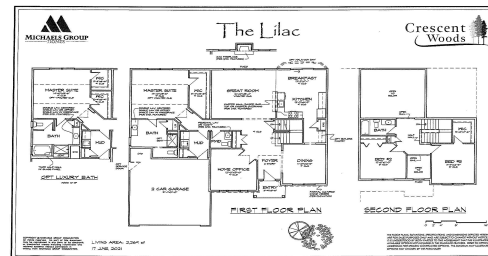
**Parking Spaces:** 4



**Daniel Davies**  
NYS Licensed Real Estate  
Broker GRI, ABR,  
RSPS, SRS, C2EX  
(518) 656-9068  
[dan@daviesrealty.net](mailto:dan@daviesrealty.net)



©2022 Global MLS



©2022 Global MLS