



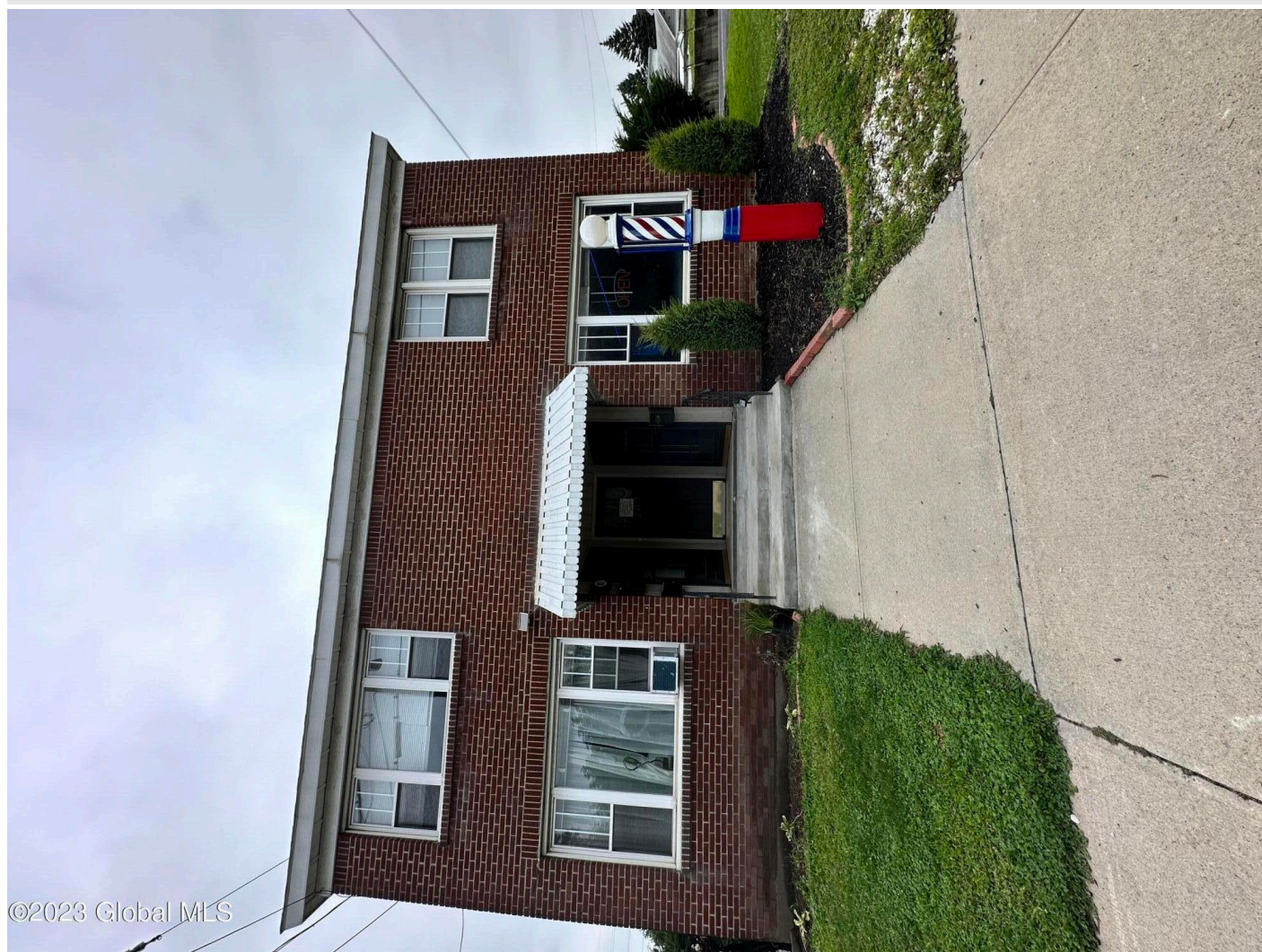
Your Lake George Real Estate Experts!

Davies Davies & Associates

P.O. Box 201, Cleverdale, NY 12820

P: (518) 656-9068 F: (518) 656-9087

www.davies-davies.com



Listing courtesy of: Red Dog Realty

MLS# - 202322373 - Price: \$450,000

209 Columbia Turnpike, Rensselaer, NY

Description: Great commercial / mixed-use building located in prime spot with lots of road frontage & two parking lots. Perfect office, barber shop or retail space and two apartments. Excellent visibility, over 25,000 cars daily. Currently, all units are rented. Low rents but could be much higher. Solid brick building and large cleared land in back. Well maintained, family owned. Large enclosed back porch, separate electric meters (4). New windows from window world. Newer furnace (ten yrs old), New hot water tank Washer/Dryer in basement, Hardwood floors. Upstairs unit is 1,300 sq ft w hardwood throughout. Close to Regeneron, airport, shops, eateries, highways, bus etc.

Acres: 0.41

School District: East Greenbush

Sewer: Public Sewer

Exterior: Brick

Parking Spaces: 15

Town: Rensselaer

Estimated Taxes: \$7,000

Heat: Natural Gas

County: Rensselaer

Zoning: Mixed

Property Type: Commercial

Water: Public

Basement: Unfinished

Cooling: None



Daniel Davies
NYS Licensed Real Estate
Broker GRI, ABR,
RSPS, SRS, C2EX
(518) 656-9068
dan@daviesrealty.net

