



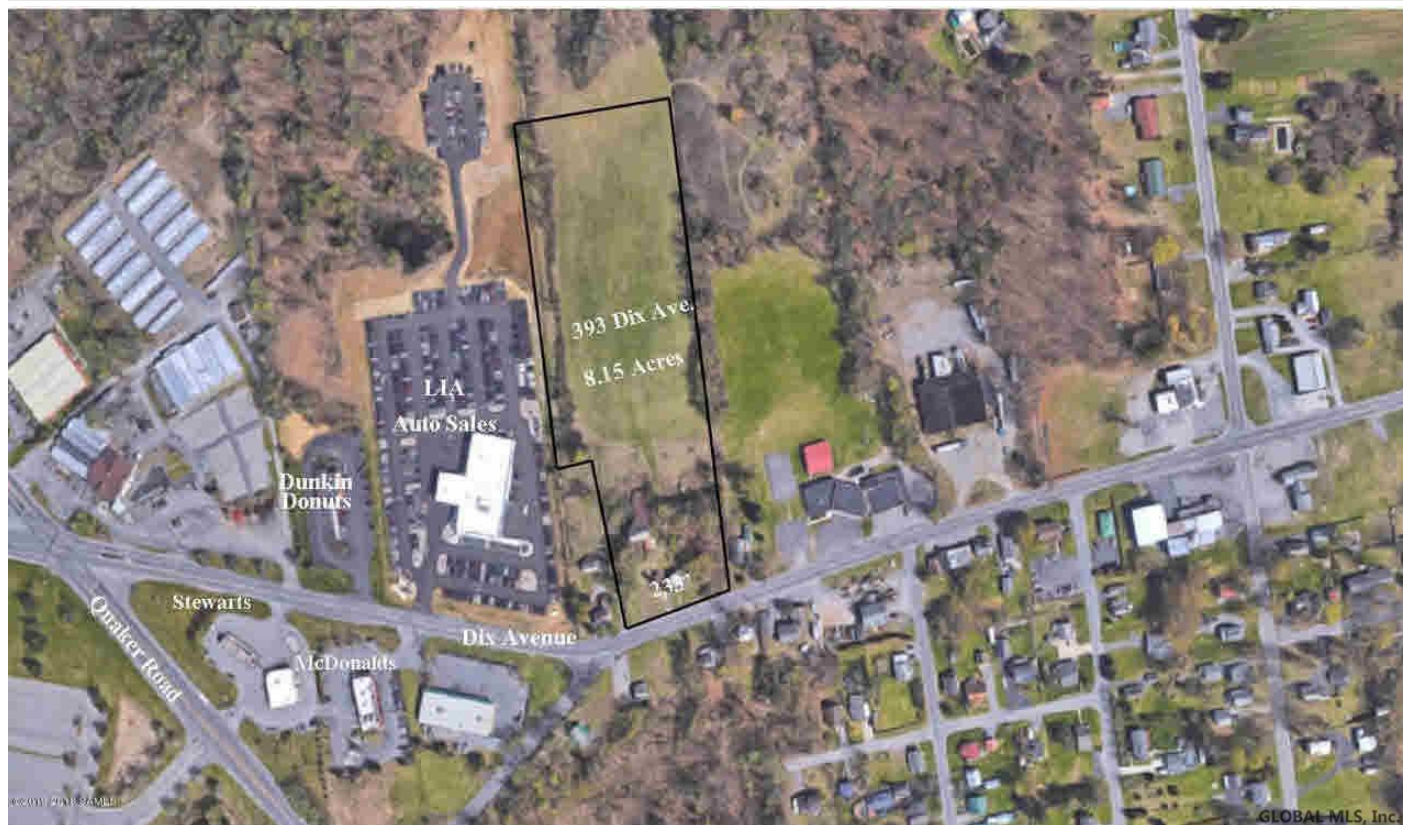
Your Lake George Real Estate Experts!

Davies Davies & Associates

P.O. Box 201, Cleverdale, NY 12820

P: (518) 656-9068 F: (518) 656-9087

www.davies-davies.com



Listing courtesy of: Berkshire Hathaway Blake

MLS# - 202318839 - Price: \$699,000

393 Dix Avenue, Queensbury, NY

Description: 8.12 acres of land on Dix Avenue with 252' frontage located just East of Quaker Road. Prime commercial location, zoned commercial moderate. Car count 14,000 plus per day. Land is mostly cleared and level. Phase 1 & survey complete.

Acres: 8.12

School District: Queensbury

Sewer: None

Basement: None

Cooling: None

Town: Queensbury

Estimated Taxes: \$7,660

Heat: None

Exterior: None

Zoning: Commercial

Property Type: Commercial

Water: Public

Property Style: Land Only

County: Warren



Daniel Davies
NYS Licensed Real Estate
Broker GRI, ABR,
RSPS, SRS, C2EX
(518) 656-9068
dan@daviesrealty.net

