



*Your Lake George Real Estate Experts!*

**Davies Davies & Associates**

P.O. Box 201, Cleverdale, NY 12820

P: (518) 656-9068 F: (518) 656-9087

[www.davies-davies.com](http://www.davies-davies.com)



©2022 Global MLS

Listing courtesy of: Coldwell Banker Prime Prop.

**MLS# - 202316463 - Price: \$346,900**

22 Joshua Place, Glenmont, NY



*Your Lake George Real Estate Experts!*

**Davies Davies & Associates**

P.O. Box 201, Cleverdale, NY 12820

P: (518) 656-9068 F: (518) 656-9087

[www.davies-davies.com](http://www.davies-davies.com)

**Description:** Luxury 2- Bedroom Townhome, 1st floor Master, Loft, 2.5 Baths and 2-Car Garage in Phase III. Just 3 lots remain. Maintenance Free Community with convenient Bethlehem Center location. Close to all major arterials and shopping. Choose from Hodorowski Homes townhome plans and work with our architect to create your own unique design. High-end included amenities, decorator assistance and builder team involvement throughout. Photo are examples of finishes.

**Acres:** 0.08

**Bedrooms:** 2

**Estimated Taxes:** \$187

**Heat:** Forced Air, Natural Gas

**Basement:** Full, Sump Pump, Unfinished

**County:** Albany

**Interior Features:** High Speed Internet, Solid Surface Counters, Walk-In Closet(s), Ceramic Tile Bath, Granite Counters, Eat-in Kitchen

**Town:** Bethlehem

**Bathrooms:** 2 Full

**Water:** Public

**Garage:** 2

**Exterior:** Stone, Vinyl Siding

**Cooling:** Central Air

**Property Type:** Residential

**School District:** Bethlehem

**Sewer:** Public Sewer

**Property Style:** Colonial, Townhouse

**Exterior Features:** Lighting

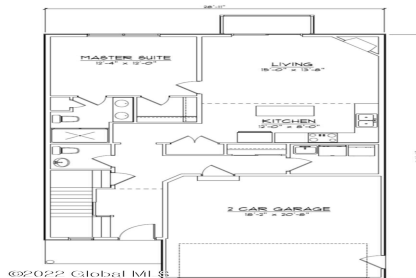
**Parking Spaces:** 2



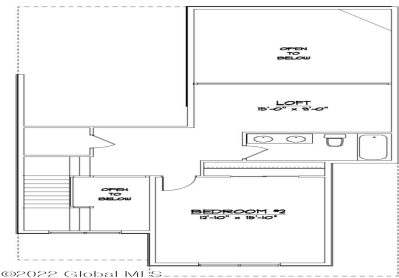
**Daniel Davies**  
NYS Licensed Real Estate  
Broker GRI, ABR,  
RSPS, SRS, C2EX  
(518) 656-9068  
[dan@daviesrealty.net](mailto:dan@daviesrealty.net)



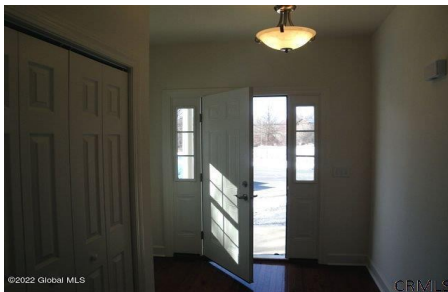
©2022 Global MLS



©2022 Global MLS



©2022 Global MLS



©2022 Global MLS



©2023 Global MLS



©2023 Global MLS



©2023 Global MLS



©2023 Global MLS



©2023 Global MLS