



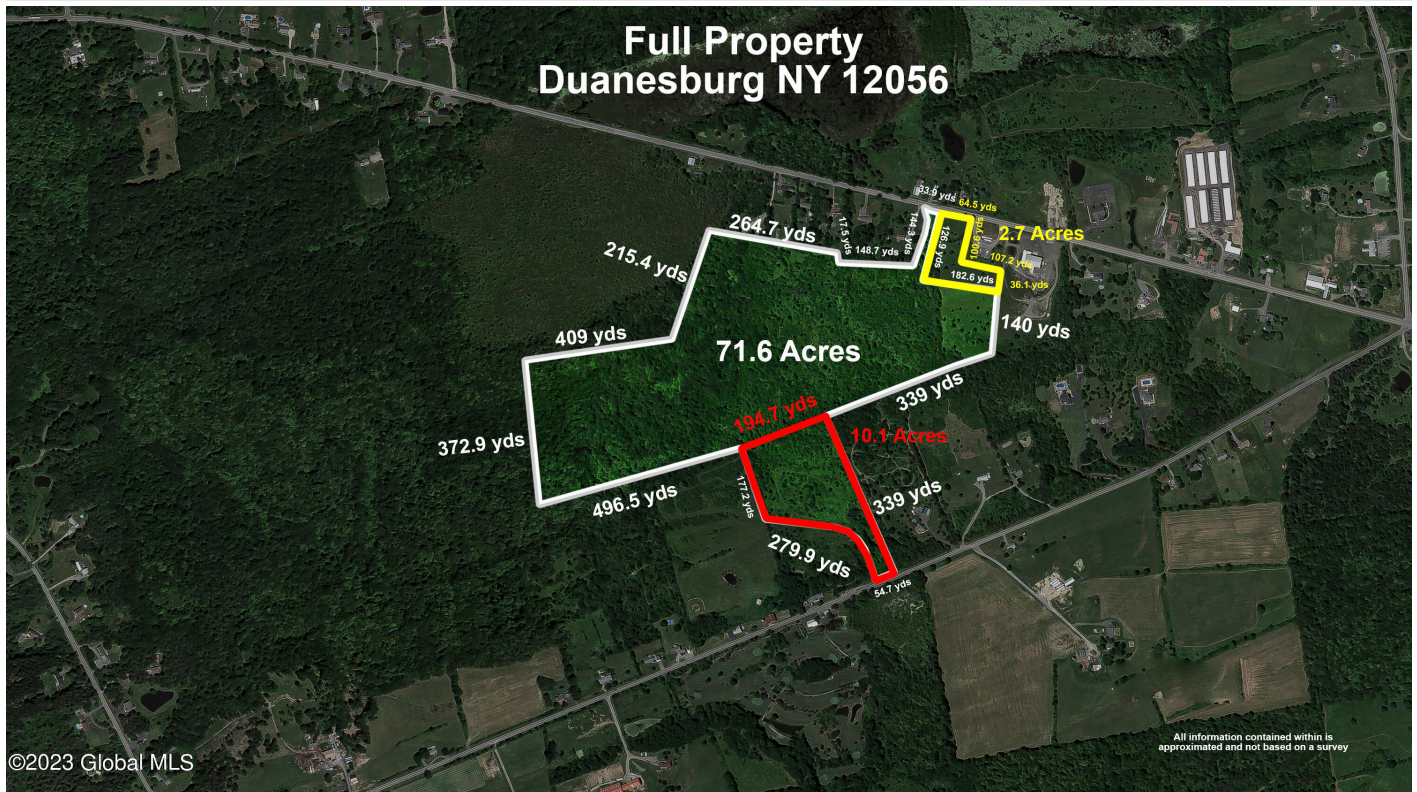
Your Lake George Real Estate Experts!

**Davies Davies & Associates**

P.O. Box 201, Cleverdale, NY 12820

P: (518) 656-9068 F: (518) 656-9087

www.davies-davies.com



Listing courtesy of: Keller Williams Capital Dist

**MLS# - 202312092 - Price: \$249,000**

2400 Western Turnpike, Duanesburg, NY

**Description:** Located just off i88, this property would be a great location for residential or commercial development. This is a combination of two parcels (2.7 acres & 71.6 acres), for a total of 74.3 Acres. It could be sold separate, or combined with additional, adjoining property (10.1 acres), 400 Schoharie Turnpike (202312090) .

**Acres:** 74.6

**School District:** Duanesburg

**Sewer:** None

**Town:** Duanesburg

**Estimated Taxes:** \$3,588

**County:** Schenectady

**Property Type:** Land

**Water:** None



**Daniel Davies**

NYS Licensed Real Estate  
Broker GRI, ABR,  
RSPS, SRS, C2EX  
(518) 656-9068  
[dan@daviesrealty.net](mailto:dan@daviesrealty.net)