



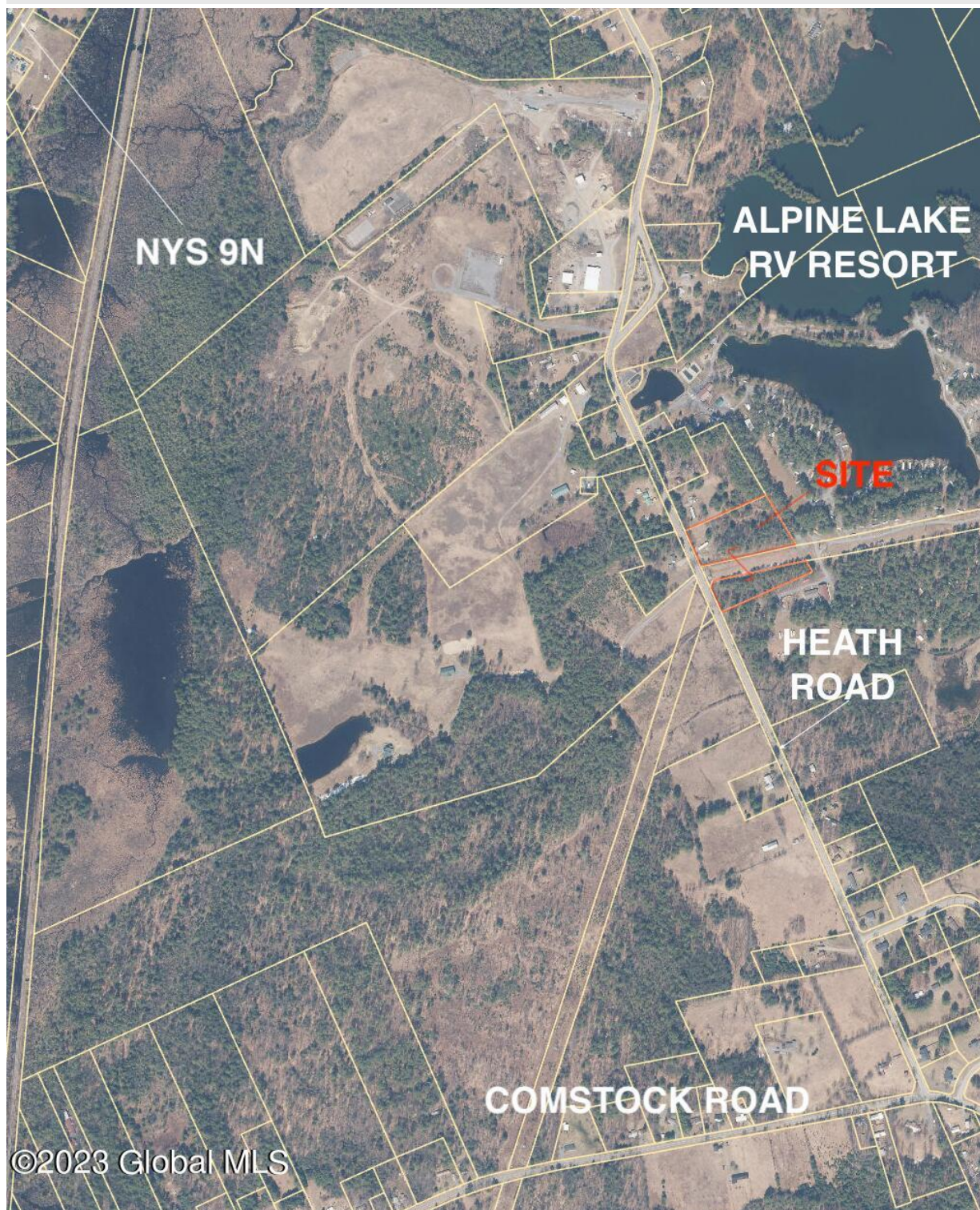
*Your Lake George Real Estate Experts!*

**Davies Davies & Associates**

P.O. Box 201, Cleverdale, NY 12820

P: (518) 656-9068 F: (518) 656-9087

[www.davies-davies.com](http://www.davies-davies.com)



©2023 Global MLS



*Your Lake George Real Estate Experts!*

**Davies Davies & Associates**

P.O. Box 201, Cleverdale, NY 12820

P: (518) 656-9068 F: (518) 656-9087

[www.davies-davies.com](http://www.davies-davies.com)

Listing courtesy of: BlueBird Commercial Real Estate, LLC

**MLS# - 202311939 - Price: \$240,000**

68 Heath Road, Corinth, NY

**Description:** ±5.4 Acre parcel located in the Town of Corinth. Zoned Commercial (COM), wide range of allowed uses such as multi-family, recreational, Veterinary, agribusiness and many others. Highly developable site; private water and sewer. Existing water well and onsite absorption field; buyer must determine if suitable for new development. Existing mobile home has month-to-month tenancy.

**Acres:** 5.38

**School District:** Corinth

**Sewer:** Septic Tank

**Town:** Corinth

**Estimated Taxes:** \$1,257

**County:** Saratoga

**Property Type:** Land

**Water:** Drilled Well

**Zoning:** Commercial



**Daniel Davies**

NYS Licensed Real Estate  
Broker GRI, ABR,  
RSPS, SRS, C2EX  
(518) 656-9068  
[dan@daviesrealty.net](mailto:dan@daviesrealty.net)