



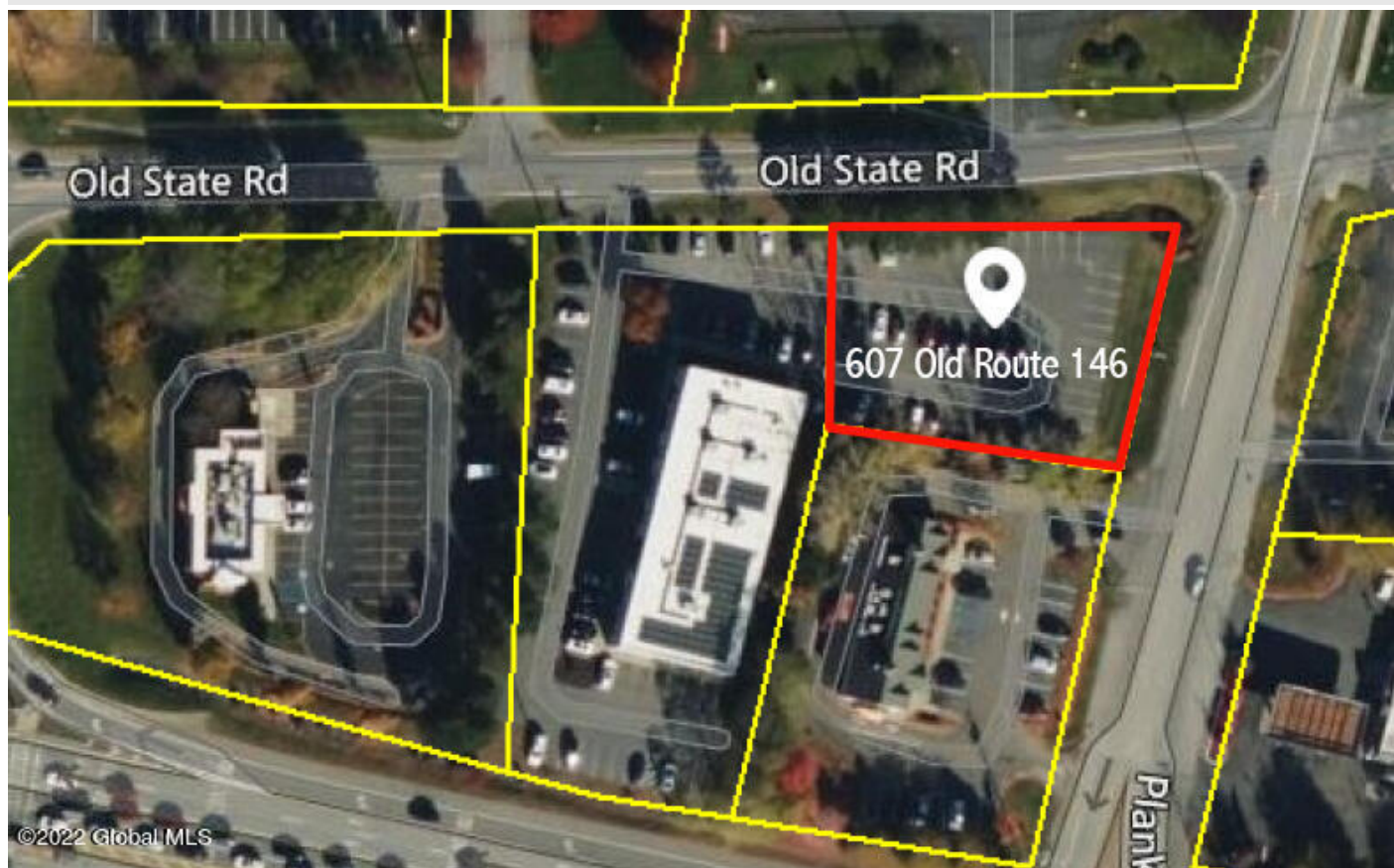
Your Lake George Real Estate Experts!

Davies Davies & Associates

P.O. Box 201, Cleverdale, NY 12820

P: (518) 656-9068 F: (518) 656-9087

www.davies-davies.com



Listing courtesy of: RE/MAX Solutions

MLS# - 202228576 - Price: \$650,000

607 Old Rt 146 , Clifton Park, NY

Description: Prime location at the heart of Clifton Park Town Center in close proximity to Exit 9 of I87. This vacant 0.46 acre lot is in the Town Center TC5 zoning district offering a long list of uses including residential mixed use. The high density Town Center area is designed for walking traffic and this lot situated on the corner of Plank Road and Old Route 146 is surrounded by restaurants, offices, retail, hotels and newly planned mixed use residential projects. A site plan and renderings for a 2 story +/- 11,600 SF luxury office/retail building are available as an example of what can be built on this lot. Flexible form based zoning code allows for creative architectural designs and features.

Acres: 0.46

School District: Shenendehowa

Sewer: Public Sewer

Town: Clifton Park

Estimated Taxes: \$3,823

County: Saratoga

Property Type: Land

Water: Public

Zoning: Commercial



Daniel Davies
NYS Licensed Real Estate
Broker GRI, ABR,
RSPS, SRS, C2EX
(518) 656-9068
dan@daviesrealty.net

