



Your Lake George Real Estate Experts!

Davies Davies & Associates

P.O. Box 201, Cleverdale, NY 12820

P: (518) 656-9068 F: (518) 656-9087

www.davies-davies.com



GLOBAL MLS, Inc.

Listing courtesy of: Hanna Commercial

MLS# - 202228183 - Price: \$85,000

2871 Curry Road, Schenectady, NY

Description: Excellent commercial zoned parcel for sale with easy highway access and road frontage. Parcel is ± 1.2 acres with ± 405 ft. of frontage on Curry Road. Zoned Airport Business Area (ABA) allowing the widest range of commercial uses in the Town of Colonie. Great site for small contractor, service business general repair, and many more allowed uses. Municipal water and sewer are not available.

Acres: 1.2

School District: Mohonasen

Sewer: Septic Tank

Basement: None

Cooling: None

Town: Colonie

Estimated Taxes: \$1,140

Heat: Other

Exterior: None

Property Type: Commercial

Water: Drilled Well

Property Style: Land Only

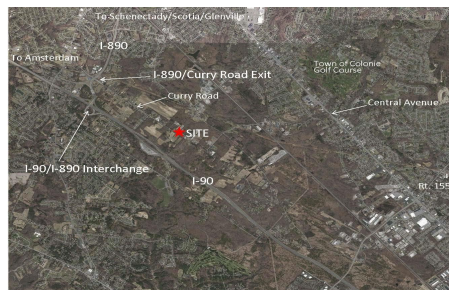
County: Albany



Daniel Davies
NYS Licensed Real Estate
Broker GRI, ABR,
RSPS, SRS, C2EX
(518) 656-9068
dan@daviesrealty.net



GLOBAL MLS, Inc.



GLOBAL MLS, Inc.