



Your Lake George Real Estate Experts!

Davies Davies & Associates

P.O. Box 201, Cleverdale, NY 12820

P: (518) 656-9068 F: (518) 656-9087

www.davies-davies.com

31 JOSHUA COURT



FRONT ELEVATION

©2022 Global ML S

Listing courtesy of: Coldwell Banker Prime Prop.

MLS# - 202219041 - Price: \$362,500

31 Joshua Place, Glenmont, NY

Description: Spec home at blueprint available phase III. Enables decreased wait time. Still time to chose interiors. 3 bedroom, 1st floor master with walkout basement and cathedral ceiling in family rm. Maintenance Free Community with convenient Bethlehem Center location. Close to all major arterials and shopping. High-end included amenities, decorator assistance and builder team involvement throughout. Photo are examples of finishes.

Acres: 0.2

Bedrooms: 3

Estimated Taxes: \$10,500

Heat: Forced Air, Natural Gas

Basement: Full, Sump Pump, Unfinished

County: Albany

Interior Features: High Speed Internet, Solid Surface Counters, Ceramic Tile Bath, Granite Counters, Eat-in Kitchen

Town: Bethlehem

Bathrooms: 2 Full

Water: Public

Garage: 1

Exterior: Stone, Vinyl Siding

Cooling: Central Air

Property Type: Residential

School District: Bethlehem

Sewer: Public Sewer

Property Style: Townhouse

Exterior Features: Lighting

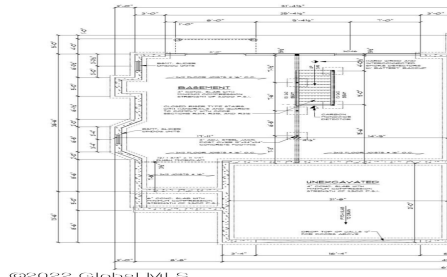
Parking Spaces: 2



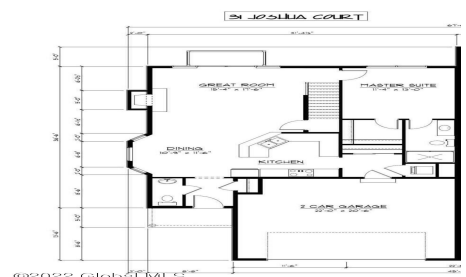
Daniel Davies
NYS Licensed Real Estate
Broker GRI, ABR,
RSPS, SRS, C2EX
(518) 656-9068
dan@daviesrealty.net



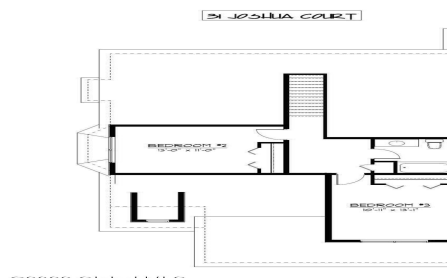
©2022 Global MLS



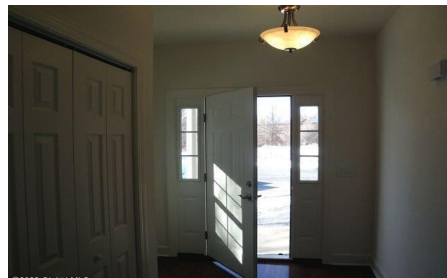
©2022 Global MLS



©2022 Global MLS



©2022 Global MLS



©2022 Global MLS



©2022 Global MLS



©2022 Global MLS



©2022 Global MLS



©2022 Global MLS