



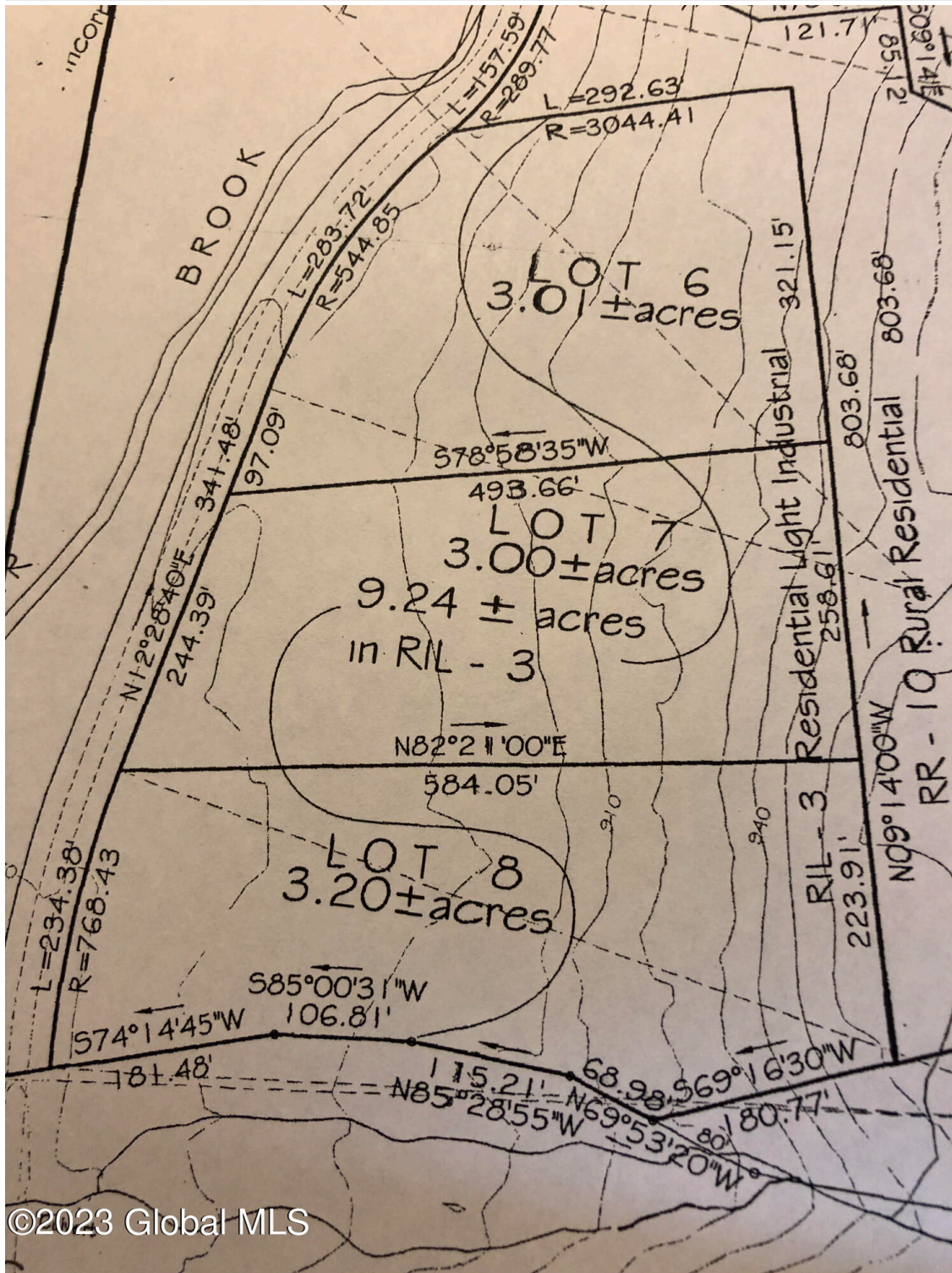
Your Lake George Real Estate Experts!

Davies Davies & Associates

P.O. Box 201, Cleverdale, NY 12820

P: (518) 656-9068 F: (518) 656-9087

www.davies-davies.com



©2023 Global MLS



Your Lake George Real Estate Experts!

Davies Davies & Associates

P.O. Box 201, Cleverdale, NY 12820

P: (518) 656-9068 F: (518) 656-9087

www.davies-davies.com

Listing courtesy of: Davies-Davies & Assoc Real Est

MLS# - 202130359 - Price: \$89,900

L827 Hendricks Road, Bolton Landing, NY

Description: One lot sold, 2 (3) acre lots currently for sale zoned Residential & Industrial Low Density (opportunities for industrial development accessible to the Northway and in harmony with the surrounding low density residential area). Possible to purchase remaining 6 acres. Buyer responsible for well & septic, power at roadway. Located across the street from the popular Adirondack Extreme Adventure Park just off Exit 24 off I87 Northway. Some possible uses permitted by site plan: light manufacturing, warehousing, tourist accommodations, campgrounds, sand and gravel extractions, commercial boat storage or indoor boat maintenance

Acres: 3

School District: Bolton

Sewer: Septic Tank

Exterior: None

Zoning: Mixed

Town: Bolton

Estimated Taxes: \$493

Heat: Other, See Remarks

County: Warren

Property Type: Commercial

Water: None

Property Style: Land Only

Cooling: None



Holly M. Dansbury
NYS Licensed Real Estate
Associate Broker
(518) 321-1870
hdansbury1@gmail.com

