



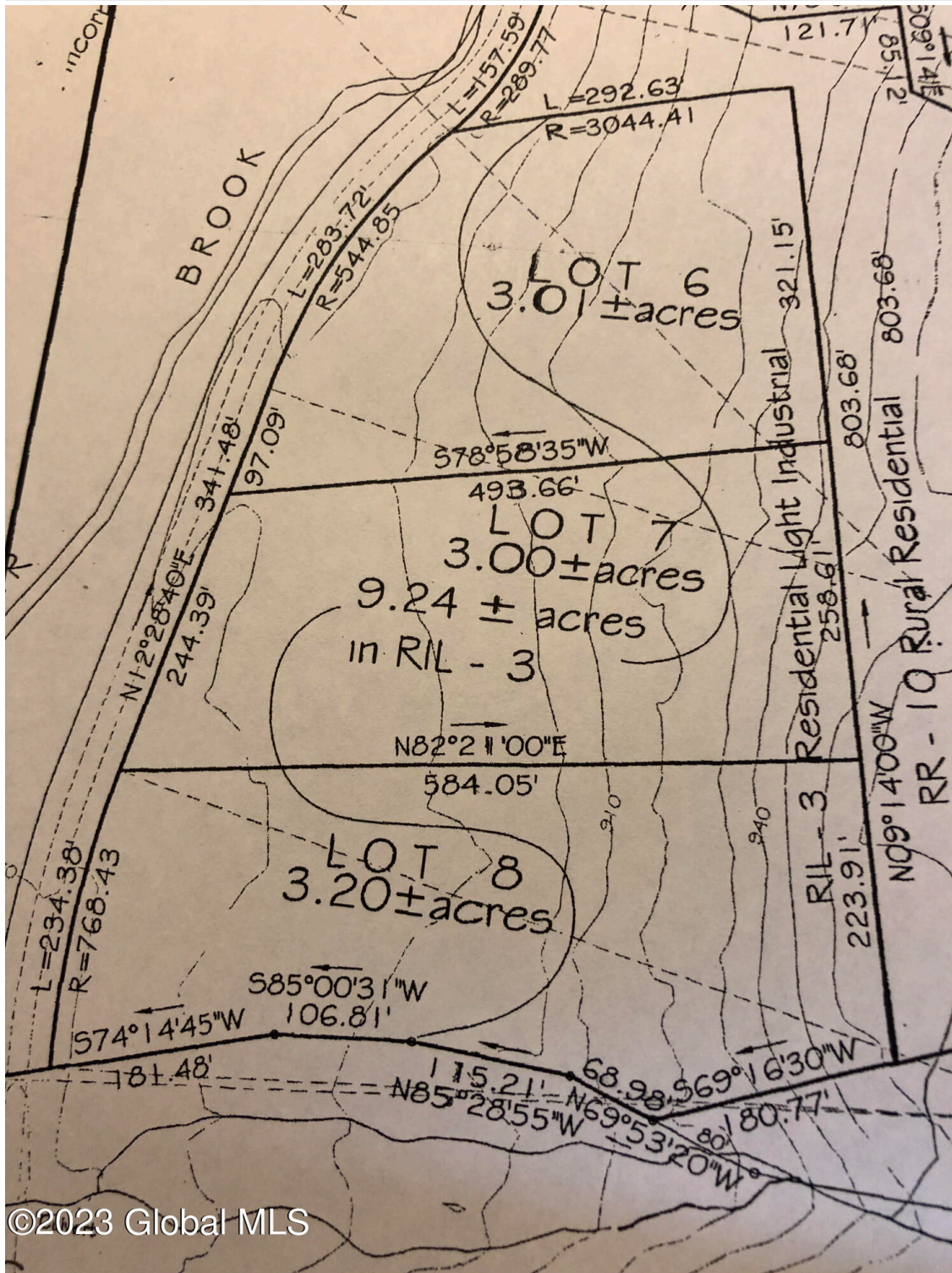
Your Lake George Real Estate Experts!

**Davies Davies & Associates**

P.O. Box 201, Cleverdale, NY 12820

P: (518) 656-9068 F: (518) 656-9087

[www.davies-davies.com](http://www.davies-davies.com)



©2023 Global MLS



*Your Lake George Real Estate Experts!*

**Davies Davies & Associates**

P.O. Box 201, Cleverdale, NY 12820

P: (518) 656-9068 F: (518) 656-9087

[www.davies-davies.com](http://www.davies-davies.com)

Listing courtesy of: Davies-Davies & Assoc Real Est

**MLS# - 202130358 - Price: \$89,900**

L828 Hendricks Road, Bolton Landing, NY

**Description:** One lot sold, 2 (3) acre lots currently for sale zoned Residential & Industrial Low Density (opportunities for industrial development accessible to the Northway and in harmony with the surrounding low density residential area). Possible to purchase remaining 6 acres. Buyer responsible for well & septic, power at roadway. Located across the street from the popular Adirondack Extreme Adventure Park just off Exit 24 off I87 Northway. Some possible uses permitted by site plan: light manufacturing, warehousing, tourist accommodations, campgrounds, sand and gravel extractions, commercial boat storage or indoor boat maintenance



**Acres:** 3.2

**School District:** Bolton

**Sewer:** None

**Exterior:** None

**Zoning:** Mixed

**Town:** Bolton

**Estimated Taxes:** \$503

**Heat:** Other, See Remarks

**County:** Warren

**Property Type:** Commercial

**Water:** None

**Property Style:** Land Only

**Cooling:** None



**Holly M. Dansbury**  
NYS Licensed Real Estate  
Associate Broker  
(518) 321-1870  
[hdansbury1@gmail.com](mailto:hdansbury1@gmail.com)

