



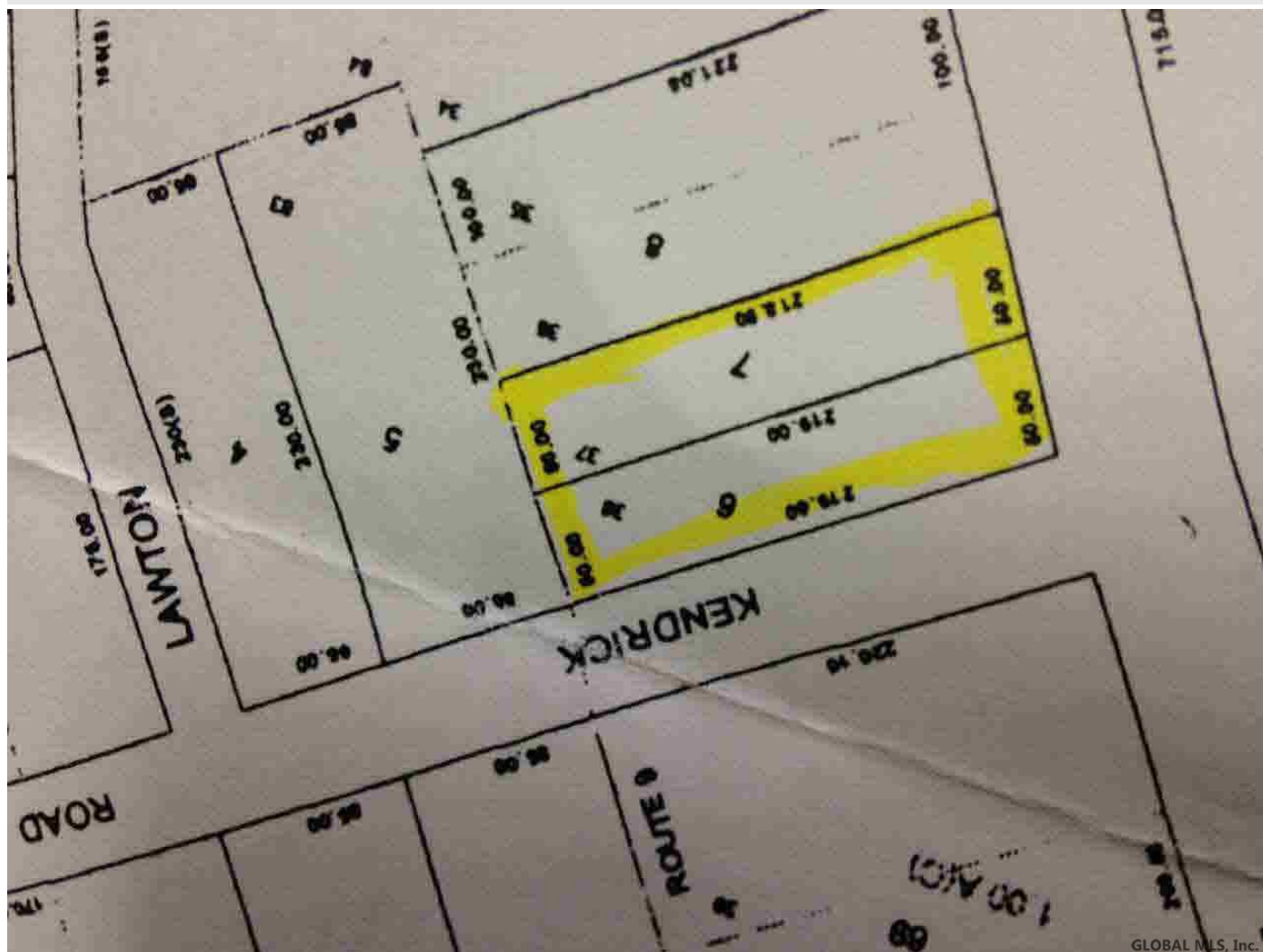
Your Lake George Real Estate Experts!

Davies Davies & Associates

P.O. Box 201, Cleverdale, NY 12820

P: (518) 656-9068 F: (518) 656-9087

www.davies-davies.com



GLOBAL MLS, Inc.

Listing courtesy of: Howard Hanna

MLS# - 125609 - Price: \$295,000

000 State Route 9 , Queensbury, NY

Description: Vacant, never developed, high traffic CORNER LOT. Near Sleep Inn and across side street from Cumberland Farms. A Super, WalMart, is within a few hundred yards. Six Flags Great Escape is about 1/2 mile north of this property.. Municipal water, natural gas and sewer at property.

Acres: 0.51

School District: Queensbury

Sewer: Public Sewer

Town: Queensbury

Estimated Taxes: \$4,000

County: Warren

Property Type: Land

Water: Public

Zoning: Commercial



Daniel Davies
NYS Licensed Real Estate
Broker GRI, ABR,
RSPS, SRS, C2EX
(518) 656-9068
dan@daviesrealty.net