



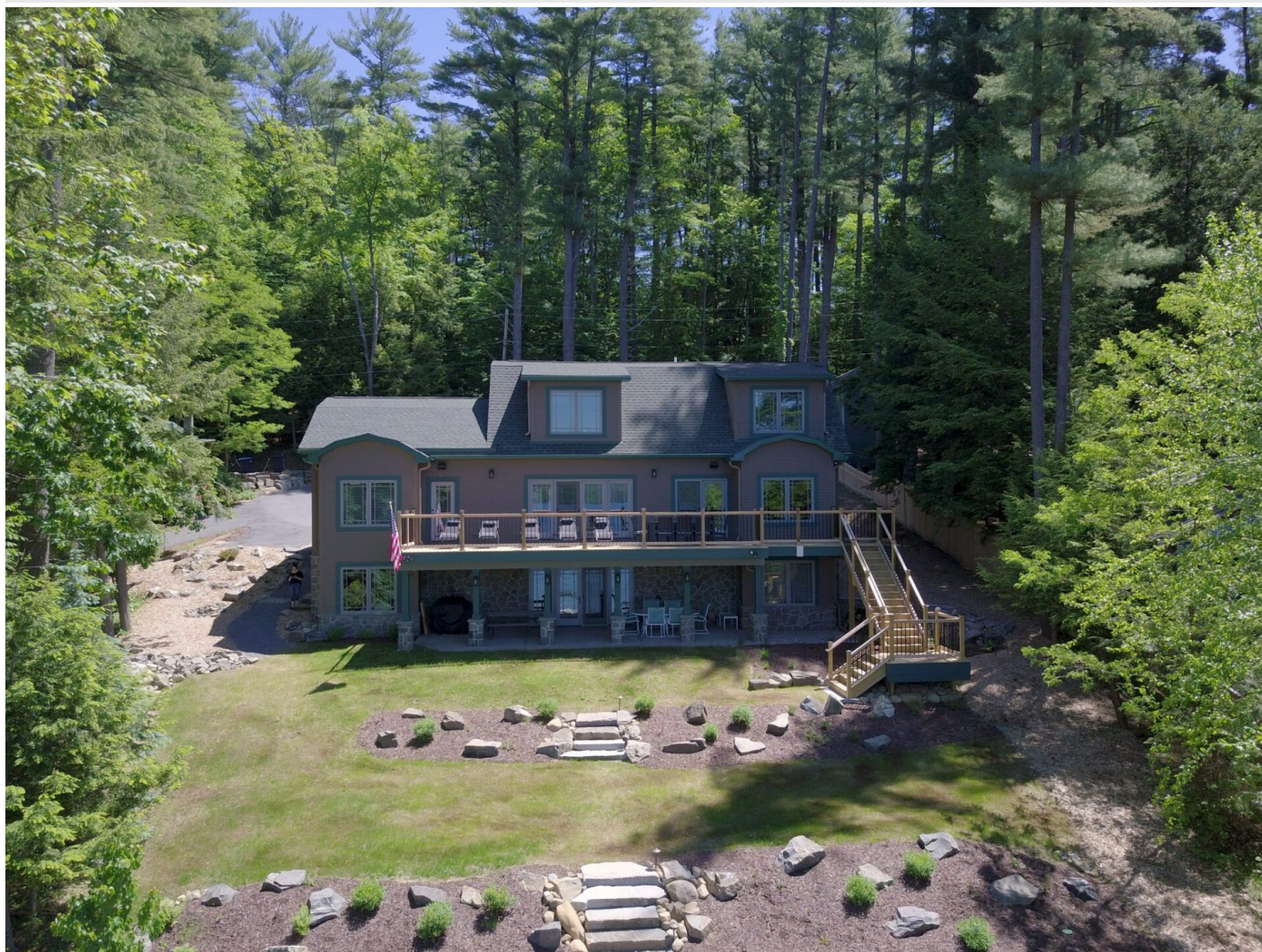
*Your Lake George Real Estate Experts!*

**Davies Davies & Associates**

P.O. Box 201, Cleverdale, NY 12820

P: (518) 656-9068 F: (518) 656-9087

[www.davies-davies.com](http://www.davies-davies.com)



## Lake George Vacation Rental Assembly Point Knox

Listing courtesy of:

**MLS# - lakegeorgevacationrentalassemblypointknox - Price: \$18,350**

, Assembly Point, Lake George, NY

**Description:** Linens supplied, \$550 cleaning fee, tenant to leave the house tidy. NO PETS Beautifully constructed spacious new home with wonderful western views across the main lake. Great room with doors to the deck, dining, kitchen, half bath, laundry, master bedroom with 3/4 bath, gas fireplace in living room. Upstairs there's a second floor master with a queen, full bath, bedroom next to master with two fulls, over the garage in the bonus room are two twins and two fulls. Lower level has family room, full bath, kitchenette, bedroom with queensized bed. Supplying sheets and towels, no pets. E shaped dock with space for tenants' 30' boat, physical space is 33' x 13'- tenant has the option to rent an additional space-there



*Your Lake George Real Estate Experts!*

**Davies Davies & Associates**

P.O. Box 201, Cleverdale, NY 12820

P: (518) 656-9068 F: (518) 656-9087

[www.davies-davies.com](http://www.davies-davies.com)

will be an extra cost for that. Note: 4% Warren County Bed Tax in addition



**Bedrooms:** 5

**Bathrooms:** 2 Full

**Bed Types:** 1st floor Master - King 2nd Floor Master - Queen 2nd floor bed next to master - Two fulls Bonus room over garage - Two fulls, 2 Twins Basement Bed - Queen

**Swimming Area:** Swim from the dock

**Dock Space:** 30' dock space, second space available for extra fee

**Feet from Lakefront:** Just across lawn

**Amenities:** Newly built equipped kitchen, central air, wifi, cable television, washer/dryer, dishwasher, sheets and towels supplied

**Outdoor Features:** Deck, grill, dock

**View:** On the west side of Assembly Point with panoramic view across the lake to the mountains

**Yard:** Mostly gardens and walkways

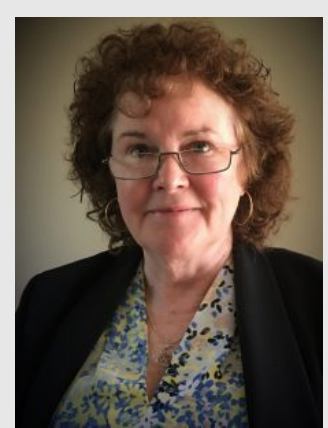
**Availability:** Weekly

**Max People:** 10

**Basin:** Southern Basin East Side

**Rental Availability:** Weekly

**Sleeps Max People:** 10



**Jane O. Callahan**  
NYS Licensed Salesperson-  
Rentals  
(518) 656-9758  
[jane@daviesrealty.net](mailto:jane@daviesrealty.net)

